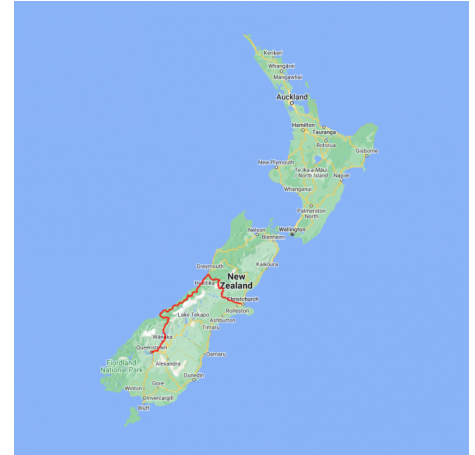


Christchurch to Queenstown Luxury Explorer

Cross the Southern Alps via Arthurs Pass and then travel the West Coast to the Southern Lakes region and the adventure playgrounds of Wanaka and Queenstown, staying at premier lodges along the way.

Starts in: Christchurch
 Finishes in: Queenstown
 Length: 8days / 7nights
 Accommodation: Luxury Lodges
 Can be customised: Yes

This itinerary can be customised to suit you perfectly. We can add more days, remove days, change accommodations, mix it up, add activities to suit your interests or simply design and create something from scratch. Call us today to get your custom New Zealand itinerary underway.



Inclusions:

- Includes: Late model rental cars
- Includes: Fully inclusive rental car insurance (excess may apply)
- Includes: Unlimited kms
- Includes: GPS navigation
- Includes: Airport & ferry terminal rental car fees
- Includes: Additional drivers
- Includes: Comprehensive tour pack (detailed itinerary, driving instructions, map/guidebooks, brochures)
- Includes: 24/7 support while touring New Zealand
- Included activity: Private transfer Christchurch International Airport to your accommodation
- Included activity: Electronic Travel Guide and In-Country Support App
- Meals included: 7 breakfasts, 2 dinners



Day 1



Private transfer Christchurch International Airport to your accommodation

On arrival, you will be met by a private driver and transferred to your Christchurch accommodation.

Welcome to Christchurch City

Christchurch New Zealand's garden city is steadily being transformed into a vibrant urban destination. Encompassing a large green belt, it is known for its wide tree lined avenues and lush gardens. A great way to explore the city or easy way to see the sights or ride the historic trams across town to the renowned botanic gardens and the unique cardboard Transitional Cathedral, that's right it is built of cardboard!

Your accommodation: The George Hotel

The George is the essence of supreme comfort. The award-winning 5 star hotel is opposite Hagley Park and just a few minutes stroll from the Botanic Gardens. It also has an award-winning restaurant, 50 Bistro onsite.



Day 2



Collect your rental car

This tour can be priced with any of the rental cars available in our fantastic range, from economy hatchbacks to prestige saloons and SUV's.

Christchurch to Arthur's Pass

Crossing the Canterbury Plains, the rich farmland that attracted and helped settlers prosper becomes apparent as you head out of the city and towards the mountains.

The drive through the Waimakariri offers some spectacular views of the braided river valleys. Castle Hill Scenic Reserve sits in limestone country and the area is dotted with remarkable rock outcrops. Today its a popular location for climbers to practice but in the past it was also an important place for Maori in past years as they provided shelter on their seasonal journeys between the coasts. There is a network of walking paths allowing you to explore. The high country lakes and mountain landscape is unique. Arthur's Pass National Park covers 114,500 ha right in the heart of the Southern Alps.

Your accommodation: Wilderness Lodge, Arthurs Pass

Wilderness Lodge sits on it's own 3,000-hectare nature reserve and merino sheep farm and is surrounded by the mountains of Arthur's Pass National Park. Join nature guides to walk, canoe and discover kea parrots, giant buttercups, pygmy forests, alpine flower gardens and waterfalls.

Meals included: Breakfast, Dinner



Day 3



Explore Wilderness Lodge, Arthur's Pass

Nestled in mountain beech forest, midway between Christchurch and the West Coast, Wilderness Lodge Arthur's Pass offers stylish accommodation, great food, and warm hospitality in a spectacular mountain setting.

Set on a 4000 acre working sheep farm and nature reserve in the heart of the Southern Alps, a daily program of guided activities will be the highlight of your visit. Join naturalist and farmer guides to hike alpine trails, kayak wildlife refuge lakes, and experience life on a working farm.

Your accommodation: Wilderness Lodge, Arthurs Pass

Wilderness Lodge sits on it's own 3,000-hectare nature reserve and merino sheep farm and is surrounded by the mountains of Arthur's Pass National Park. Join nature guides to walk, canoe and discover kea parrots, giant buttercups, pygmy forests, alpine flower gardens and waterfalls.

Meals included: Breakfast



Day 4



Arthur's Pass to Franz Josef Glacier

Travel through the Otira Gorge towards the wild West Coast. The next town is Hokitika and this is a great place to explore the craft and gift stores. The Jade or Greenstone on offer in Hokitika is probably some of the best you will see in the country. The Hokitika Gorge, off the beaten track and inland a little is a spectacular 45-minute detour. Turquoise waters flow through a narrow gorge. A great short walk will deliver you to this piece of paradise. Heading south Ross is the next town this is the site of an old gold mining town and still to this day a working gold mine and there is an option to pan for your own. Continuing south Hari Hari is the township that Guy Menzies decided to land in (or rather crash land) as he became the first person to fly solo across the Tasman. Whataroa, a small township on the main road is where you would head off to see one of the world's rarest birds. The entire population (somewhere between 150 and 200 birds) of the New Zealand white heron or Kotuku nest at the Waitangi Roto Nature Reserve and guided tours from October to March will take you there. Arriving in Franz Josef township is a lively place with a great atmosphere, restaurants including Blue Ice and Snakebite are worth a meal. This small town is packed with walks, adventure, and scenic activities, something for everyone.

SUGGESTED ACTIVITY - Twin Glacier Scenic Helicopter Flight with The Helicopter Line

Take a spectacular scenic flight over two of New Zealand's most famous glaciers. Land at the head of one and view the incredible sight of this frozen river as it winds its way through ancient carved valleys. Should weather not be suitable to take this flight you are able to transfer your booking onto a similar tour on any of the Helicopter Line's operations in Queenstown or Mt Cook.

Your accommodation: Te Waonui Forest Retreat

Nestled amongst native West Coast rainforest at Franz Josef is a very special five-star retreat. Designed with utmost care of its precious environment, guests at Te Waonui Forest Retreat will find themselves encircled by rainforest and accommodated in natural and sustainable luxury.

Meals included: Breakfast, Dinner



Day 5



Franz Josef to Wanaka

Heading south you will climb over the Fox hills before arriving at the small town of Fox Glacier. If it's a nice day enjoy spectacular reflections of snowcapped mountains in Lake Matheson, located just 5 minutes west of Fox. Heading south from Fox enjoy the amazing scenery of the Southern Alps, and sneak peeks of the rugged beaches while winding through ancient temperate rainforests. Paringa Salmon Farm is worth a stop to stretch your legs, feed the fish, and stop for lunch and refreshments. At Knights Point Lookout, elephant seals can often be seen basking on the sandy beaches at the far end of the point. Crossing the Haast River you'll turn inland and through the mountainous valley littered with waterfalls. A great suggested stop along this route is the Blue Pools. Continue on past lakes Hawea and Wanaka into the alpine township of Wanaka.

SUGGESTED ACTIVITY - Lake Cruise and Island Nature Walk with Eco Wanaka

Lying close to the centre of Lake Wanaka is Mou Waho Island Nature Reserve. A unique glacial remnant of the last ice age, the island is also the historic site of early shipbuilding and used to be a stopping place for the steamers and log rafts that once plied the lake. Accessible from Wanaka by a 35-minute boat cruise, the landing is on the eastern side of the island where the remnants of the early settlement remain; a stone wharf and a hut. A well-formed track leads from the landing and climbs steadily through native bush to near the top of Tyrwhitt Peak. Just before the top, we see Arethusa Pool, a small lake on the island with small islands in it - very intriguing! From the top, we have a sweeping 360-degree view of Lake Wanaka, its surrounding mountains and valleys, and below Arethusa Pool. The perfect spot to stop for tea or coffee. Going back down the track gives us more time to take in our surroundings, listening to and watching the lively bird-life, and just enjoying this unique wildlife reserve. You will feel well rewarded as you re-join the boat for the cruise back to Wanaka. Total cruise time is 1.5 hours. The trip runs subject to weather and lake conditions. Depending on the planting season, you can help The Reforestation of Mou Waho by planting a tree.

Your accommodation: Tin Tub Luxury Lodge

Experience the Tin Tub Luxury Lodge in Wanaka, an alpine hideaway you won't want to leave. Enjoy the magnificent views while you relax in the heated swimming pool or from your personal balcony.

Meals included: Breakfast



Day 6



Wanaka to Queenstown

Leaving Wanaka, you head over New Zealand's highest sealed road, Crown Range Road, before dropping into Queenstown. This drive only takes about an hour, but you should allow more time to enjoy the magnificent scenery and explore the walks and many stops en route, including the Cardrona Distillery, wonderful views from Crown Range's highest point over Queenstown, the picturesque town of Arrowtown, and if time allows, even the wineries in Gibbston.

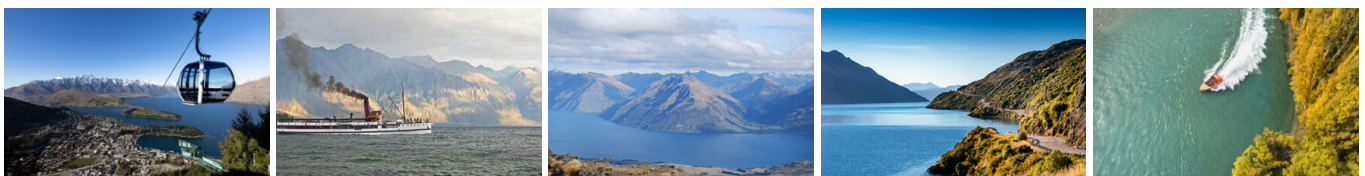
Your accommodation: Azur Lodge

It's hard to imagine a more perfect view than the one from Azur Lodge, this luxury accommodation offers amazing vistas of Lake Wakatipu & the surrounding mountains. As well as the luxury guest villas, there is a main lodge for guest use, breakfast dining room & stunning guest lounge.

Meals included: Breakfast



Day 7



Explore Queenstown

Well-known as New Zealand's 'adventure capital', Queenstown is home to a range of adventures, from the world's first and most famous bungee jumps to jet boat thrills, white-water rafting, and skydiving. However, Queenstown offers far more than a fast-paced, action-packed holiday. Settled on the shores of beautiful Lake Wakatipu beneath a soaring panorama of the Remarkables Mountain Range, this alpine town is surrounded by many historic, gastronomic, and scenic wonders. Take a stroll through the beautiful lakefront parks and gardens, browse through market stalls on weekends, dine in wonderful al-fresco restaurants, or ride on the 100-year-old historic Steamship - TSS Earnslaw to Walter Peak Station. Take the Queenstown Gondola up to Bob's Peak and soak up the panoramic views of the magnificent lake and mountain ranges. And after all of that, if you do want the adrenaline rush, Queenstown is known for taking your pick from the Shotover Jet, Canyon Swing, Zipline, Luge, or Heli-hike.

SUGGESTED ACTIVITY - Dart River Wilderness Jet

Journey deep into the heart of the world-renowned Mt Aspiring National Park, where myth, heritage and fantasy come to life. As one of Queenstown's most exhilarating activities, the Wilderness Jet adventures on a spectacular journey deep into the heart of the world-renowned Mount Aspiring National Park.

SUGGESTED ACTIVITY - Arrowtown and Around Sightseeing Tour

Discover Queenstown, Arrowtown and the surrounding regions amazing scenery with a local knowledgeable guide. Enjoy the region's best sights and history on a small group guided tour leaving from Queenstown. Includes stops at a honey farm to taste premium Manuka Honey. Make the most of an amazing photo stop at Queenstown Hill for views over Lake Wakatipu, the Kawarau Bungee bridge, Lake Hayes and Lord of the Rings locations. There is free time to explore in Arrowtown and the Chinese Village.

Your accommodation: Azur Lodge

It's hard to imagine a more perfect view than the one from Azur Lodge, this luxury accommodation offers amazing vistas of Lake Wakatipu & the surrounding mountains. As well as the luxury guest villas, there is a main lodge for guest use, breakfast dining room & stunning guest lounge.

Meals included: Breakfast



Day 8



Your final morning in Queenstown before driving to the airport and catching your next flight

Depending on when your flight departs you might have time for one last Queenstown adventure before dropping your car off at the airport and catching your flight.

Farewell from New Zealand

Bid farewell to New Zealand, taking with you unforgettable memories of its breathtaking landscapes and incredible adventures.

Tour details

Departures:	Daily
Tour type:	South Island Self Drive
Starts:	Christchurch
Finishes:	Queenstown
Tour length:	8
Accommodation:	Luxury Lodges
Car/transport type:	

Included activities

Includes	2 dinners
Includes	All breakfasts
Includes	Private airport transfers

Accommodation summary

Day 1	The George Hotel
Day 2	Wilderness Lodge, Arthurs Pass
Day 3	Wilderness Lodge, Arthurs Pass
Day 4	Te Waonui Forest Retreat
Day 5	Tin Tub Luxury Lodge
Day 6	Azur Lodge
Day 7	Azur Lodge