

The Southern Circle Day Walks

From Christchurch this tour travels the Canterbury Coastline through Timaru, Oamaru and Moeraki to Dunedin. A full day to explore the peninsula, its wildlife and its walks. Cross the rich farmland of Southland toward Te Anau and Fiordland National Park where you experience a guided day hike on the world famous Milford Track. Then venture along the Milford Road exploring the many short trails before spending the night on Milford Sound, without doubt this will be a highlight of your trip. Continue north to the adventure mecca of Queenstown with lots of time to explore the many activities or simply relax and soak up the atmosphere. Next take a fully guided day hike on the incredible Routeburn Track. A short drive over the crown range (the highest sealed road in New Zealand) and onto Wanaka, a walkers paradise. An afternoon self-exploring along the Matukituki Valley is recommended. On to Mt Cook National Park, where you'll enjoy a Glacier Explorer's trip before an afternoon exploring the trails all easily accessed from the village. There is something for everyone's ability and every weather condition. Continue crossing the Mackenzie high country through Lake Tekapo and back to Christchurch.

Starts in: Christchurch
Finishes in: Christchurch
Length: 14days / 13nights
Accommodation: Motels
Can be customised: Yes

This itinerary can be customised to suit you perfectly. We can add more days, remove days, change accommodations, mix it up, add activities to suit your interests or simply design and create something from scratch. Call us today to get your custom New Zealand itinerary underway.



Inclusions:

Includes: Late model rental cars
Includes: Fully inclusive rental car insurance (excess may apply)
Includes: Unlimited kms
Includes: Afterhours emergency support while touring
Included activity: Private Transfer Christchurch International Airport to Christchurch Accommodation
Included activity: Electronic Travel Guide and In-Country Support App
Included activity: The Visitor Promise - Cultural Learning Course
Included activity: Glacier Explorers
Included activity: Lake Marian Guided Walk - lunch included
Included activity: Milford Mariner Overnight Cruise
Included activity: Full Day Routeburn Guided Walk with Nomad Safaris
Meals included: 1 breakfast, 1 dinner

Day 1



Private Transfer Christchurch International Airport to Christchurch Accommodation

On arrival, you will be met by a private driver and transferred to your Christchurch accommodation.

Welcome to Christchurch City

Christchurch New Zealand's garden city is steadily being transformed into a vibrant urban destination. Encompassing a large green belt, it is known for its wide tree lined avenues and lush gardens. A great way to explore the city or easy way to see the sights or ride the historic trams across town to the renowned botanic gardens and the unique cardboard Transitional Cathedral, that's right it is built of cardboard!

Your accommodation: Quest on Cambridge

Quest on Cambridge serviced apartment-style hotel rooms offer guests a relaxed and comfortable Christchurch accommodation experience. Each room has an open-plan living area, a fully equipped kitchen, and natural light. Quest on Cambridge is a short walk from the south shopping centre and to the Botanic Gardens.



Day 2



Collect Rental Car

This tour's from price includes an intermediate-sized vehicle, setting you up for comfortable travels. Yet, we understand every adventure is unique! Feel free to select the perfect wheels from our incredible collection of rental cars, spanning from economy hatchbacks to premium SUVs.

Christchurch to Dunedin

Crossing the vast Canterbury Plains you'll head South on State Highway one, traversing many braided rivers that start their life as glacial melt water high in the Southern Alps. Go over New Zealand's longest bridge at Rakaia and onwards through Timaru.

Stretch your legs in Oamaru, known for its white stone buildings constructed with the local Oamaru Stone. If you were a little late off the mark this morning you may get the chance to see the local blue penguins come ashore at dusk. Continue down the coast to Moeraki, and take a detour towards the beach to see the Moeraki Boulders, a unique geological feature and well worth the look.

As you arrive in Dunedin, take in the city's Edwardian and Scottish heritage reflected in the buildings around the city centre The Octagon.

Your accommodation: Motel on York

Motel on York is located in the heart of Dunedin city. The property offers superior accommodation only 300 metres away from cafes and restaurants.



Day 3



Explore Dunedin and the Otago Peninsula

Known as the Edinburgh of the South, Dunedin City has a heavy Scottish influence. Surrounded by rugged coastal plains and windswept beaches it's home to an eclectic mix of historical and modern architecture as well as industrial technology. Renowned for its Flemish Baroque-inspired 'gingerbread house' Railway Station, this university town is bustling with life. Head to the Saturday farmers market held in the aforementioned railway grounds for a taste of organic produce, handmade crepes and local honey. Explore the many cafes and wine bars in The Octagon, then continue on a self-guided walking tour of the internationally acclaimed Street Art dotted around the city. Drive to the coast and watch the freighters passing in the distance while you sunbathe, or hire a mountain bike and test your legs on one of the many trails available in the area. For a more immersive historical experience, follow the coast to New Zealand's only castle, Larnach Castle. On your way back be sure to head to the Otago Peninsula to see the largest mainland Albatross colony in the world.

Walking tracks on the Otago Peninsula

There are a number of short walks to enjoy on the Peninsula. The information below is provided by the Department of Conservation. Sandfly Bay

Walking Time: 1 hr return walk from carpark

Getting there - drive is approximately 25 minutes from the centre of Dunedin. Tunnel Beach

Walking Time: 1 hour / 2km return walk from carpark

Getting there - drive is approximately 15 minutes south from the centre of Dunedin. Sandymount

Walking Time: Lovers Leap 50 min return walk from carpark or Sandymount Circuit 1 hr return walk from carpark

Getting there - drive is approximately 30 minutes from the centre of Dunedin. Allans Beach

Walking Time: 5 min walk to the beach from carpark

Getting there - drive is approximately 40 minutes from the centre of Dunedin.

SUGGESTED ACTIVITY - Wildlife Peninsula Encounter Tour and Wildlife Cruise with Monarch

Join a small-group bus tour led by a local guide across the Otago Peninsula, featuring stunning harbour views, rural landscapes, and unique wildlife. Visit a remote beach to spot sea lions, take a Monarch Wildlife Cruise to see albatross, seals, and rare seabirds, and explore a Yellow-eyed Penguin conservation reserve with hidden viewing hides. This unforgettable journey blends breathtaking scenery with intimate wildlife encounters before a relaxed return to Dunedin.

SUGGESTED ACTIVITY - Albatross Classic Tour with Royal Albatross Centre

This tour focuses on the Royal Albatrosses and wildlife that inhabit Pukekura (Taiaroa Head). Begin with a short film, then enjoy the informative commentary provided by your guide about albatrosses as you visit the observatory to see nesting albatrosses in their natural habitat.

Your accommodation: Motel on York

Motel on York is located in the heart of Dunedin city. The property offers superior accommodation only 300 metres away from cafes and restaurants.



Day 4



Dunedin to Te Anau (via Invercargill)

The drive to Te Anau takes you through classic Southland farming scenery. Head off-the-beaten-track today and follow the coastline instead of the inland route. Go through The Catlins area and be sure to take a detour to Kaka Point to view its majestic cliffs and pounding surf. If time permits, keep driving towards Nugget Point, iconic for its steep headland with a lighthouse perched atop. Continue through Invercargill to Riverton and Colac Bay, and then head north to Manapouri. From here you can embark on a day or overnight cruise to the remote Doubtful Sound, renowned for its natural beauty. Just a short way further will bring you to your lakeside destination of Te Anau, gateway to Fiordland National Park and Milford Sound.

SUGGESTED ACTIVITY - Te Anau Glowworm Caves with RealNZ

Begin your Te Anau Glowworm experience with a scenic cruise across Lake Te Anau on board the luxury catamaran, Luminosa, to the western side of the lake. On arrival, you'll enter the caves through Cavern House, where informative displays detail the history of this 12,000 year old underground network. You'll then explore by limestone pathway while your guide points out hidden whirlpools, sculpted rock formations, and a rushing underground waterfall. See a magical display of thousands of glowworms as you glide through the darkness in a small boat.

Your accommodation: Lakefront Lodge

Stylish self-contained motel units less than a minute walk from Te Anau Lakefront. Enjoy a close walk to shops, cafes and restaurants.



Day 5



Lake Marian Guided Walk

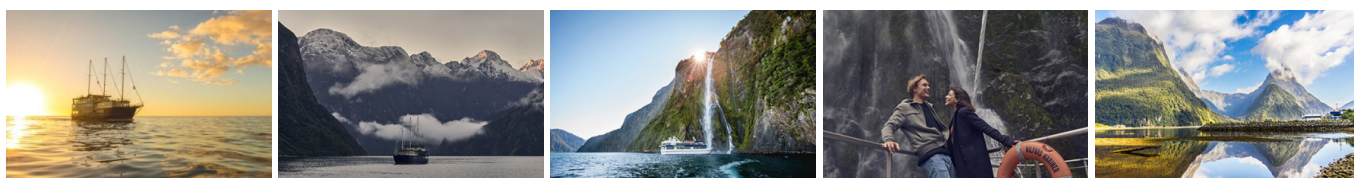
An adventurous guided day excursion from Te Anau hiking to Lake Marian amongst forest and alpine scenery. Begin with a spectacular scenic drive along the Milford Road to the Lower Hollyford, the starting point for the guided walk to Lake Marian. There are opportunities for short nature walks and photographic stops along the way. The hike starts with a gentle walk alongside a series of waterfalls, then steepens and becomes rocky underfoot as you ascend through a lush forest of fuchsia, ribbon wood and beech trees. You'll travel as part of a small group, allowing your guide to lead you on a journey of discovery that is personalised to your and your fellow hikers. Stops for photographs, bird-watching and enjoying the scenery are made along the way. Hot drinks and energy snacks are carried by the guide, and a wilderness tea break is enjoyed along the way. After walking for 2-3 hours, arrive at Lake Marian. This alpine lake is situated in a hanging valley surrounded by steep, snow clad mountains. If weather permits you'll enjoy a picnic lunch at this inspirational location and relax in this magnificent alpine amphitheatre. Descend back down the track to the Hollyford Road and then travel back to Te Anau by coach. A medium level of fitness is required to enjoy this walk.

Your accommodation: Lakefront Lodge

Stylish self-contained motel units less than a minute walk from Te Anau Lakefront. Enjoy a close walk to shops, cafes and restaurants.



Day 6



Te Anau to Milford Sound

The road to Milford Sound has countless photo opportunities and short walks. The Mirror Lakes create perfectly clear reflections of the surrounding mountains and glacier-formed meadows. Further along, you'll pass through the Homer Tunnel, an incredible feat of engineering at 1219 metres long. Milford Sound is the only sound accessible by road, making it very popular to visit. Coming into the village, you'll be greeted with an amazing view of Mitre Peak, which rises spectacularly from the waters up to the sky. Real Journey cruises can take you out into the sound where you'll receive a wealth of information on how this magnificent area has been formed and experience first-hand the multitude of waterfalls that line the fjord.

Note: Please make sure to allow 2.5hrs to Milford Sound, this takes into account the current road works on the Milford Road."

Milford Mariner Overnight Cruise

The Milford Mariner offers you a very special dinner, bed and breakfast experience on Milford Sound. Onboard the Milford Mariner you will cruise the full length of this spectacular fiord to the Tasman Sea before anchoring for the night in sheltered Harrison Cove. Accompanied by a nature guide you can go exploring in the tender craft and kayaks or simply relax on deck. After the day's activities, you enjoy a delicious evening buffet in the spacious saloon before retiring to your private cabin.

The vessel itself was designed along the lines of a traditional New Zealand coastal trading scow to reflect Fiordland's heritage. Departing from the Milford Wharf, the Milford Mariner cruises the length of Milford Sound to the Tasman Sea leisurely exploring on the way many points of interest, there is plenty of time to view the waterfalls, rainforest, mountains and wildlife and the experienced nature guide on board will be able to answer any questions you may have. After reaching the open sea, subject to weather and favourable conditions the sails are hoisted for a period. The vessel returns to the calm and shelter of Harrison Cove for your overnight stay.

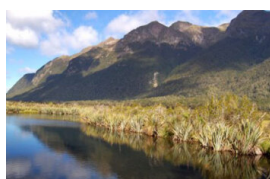
Your accommodation: Overnight Boat in Milford Sound

Onboard the Milford Mariner you will cruise the full length of this spectacular fiord to the Tasman Sea before anchoring for the night in sheltered Harrison Cove. After the day's activities, you'll enjoy a delicious evening buffet in the spacious saloon before retiring to your private cabin.

Meals included: Dinner



Day 7



Milford Sound Overnight Cruise returns then onto Queenstown

Your Milford Sound overnight cruise will return to Milford this morning between 9-10am.

On your journey to Queenstown, you'll cross rolling tussock lands and pass through Mossburn, the deer capital of New Zealand. Continue north through Southland countryside towards Lake Wakatipu. The road now hugs the edge of the lake and the Remarkable mountain range towers over you as you approach Queenstown, the adventure capital of New Zealand.

Note: Please make sure to allow 5.5hrs from Queenstown and 2.5hrs from Te Anau, this takes into account the current road works on the Milford Road."

SUGGESTED ACTIVITY - Gondola and 3 Luge Rides with Skyline Queenstown

In the heart of Queenstown, located 450 metres above town in the Ben Lomond Scenic Reserve is the Skyline Complex. A gondola ride to the summit makes for awe-inspiring views of the city surround. Arrive at the complex and wander the outside viewing decks for a picture perfect outlook. Then onto the Luge! The 800 metre luge track offers an exhilarating journey through banked corners, tunnels and dippers.

SUGGESTED ACTIVITY - TSS Earnslaw Cruise and Walter Peak Gourmet BBQ Dinner

Enjoy a quintessential Kiwi experience, a delicious gourmet BBQ buffet meal, and a farm demonstration in a stunning lakeside setting. Take in the stunning views of Lake Wakatipu and its surroundings as you cruise across the lake to the historic Walter Peak high country farm aboard the TSS Earnslaw Steamship. Enjoy the ambiance of the heart of the stately homestead while your Colonel's Homestead Restaurant chef prepares a gourmet BBQ dinner. Your seasonal menu includes an extensive selection of local New Zealand produce, including succulent meats and a selection of delicious vegetables and salads. Complete your meal with your choice of delicious desserts, or New Zealand cheeses. After dinner, watch the farm dogs in action with a sheep-herding demonstration and say hello to the other farm animals. Finally, cruise home under the southern stars and enjoy the fresh night air as the lights of Queenstown draw ever closer.

Your accommodation: Scenic Suites Queenstown

Scenic Suites Queenstown offers guests exquisite style and comfort, with a selection of rooms having spectacular views over Lake Wakatipu and the Southern Alps. The hotel prides itself on its 4-star hospitality that will make your stay in Queenstown even more memorable.

Meals included: Breakfast



Day 8



Explore Queenstown

Well-known as New Zealand's 'adventure capital', Queenstown is home to a range of adventures, from the world's first and most famous bungy jumps to jet boat thrills, white-water rafting, and skydiving. However, Queenstown offers far more than a fast-paced, action-packed holiday. Settled on the shores of beautiful Lake Wakatipu beneath a soaring panorama of the Remarkables Mountain Range, this alpine town is surrounded by many historic, gastronomic, and scenic wonders. Take a stroll through the beautiful lakefront parks and gardens, browse through market stalls on weekends, dine in wonderful al-fresco restaurants, or ride on the 100-year-old historic Steamship - TSS Earnslaw to Walter Peak Station. Take the Queenstown Gondola up to Bob's Peak and soak up the panoramic views of the magnificent lake and mountain ranges. And after all of that, if you do want the adrenaline rush, Queenstown is known for taking your pick from the Shotover Jet, Canyon Swing, Zipline, Luge, or Heli-hike.

SUGGESTED ACTIVITY - Wilderness Jet Experience with Dart River Safaris

Journey deep into the heart of the world-renowned Mt Aspiring National Park, where myth, heritage, and fantasy come to life. As one of Queenstown's most exhilarating activities, the Wilderness Jet adventures on a spectacular journey deep into the heart of the world-renowned Mount Aspiring National Park. It is important you read and understand the risks associated with this activity. For more information please see [here](#).

Your accommodation: Scenic Suites Queenstown

Scenic Suites Queenstown offers guests exquisite style and comfort, with a selection of rooms having spectacular views over Lake Wakatipu and the Southern Alps. The hotel prides itself on its 4-star hospitality that will make your stay in Queenstown even more memorable.



Day 9



Full Day Routeburn Guided Walk with Nomad Safaris

The Routeburn track is rated one of the world's 'Top 10 Classic Hikes', combining the thrill of personal achievement with awe-inspiring natural landscapes and unique wildlife. Your day begins as you are picked up from your accommodation and set off on the picturesque Queenstown-Glenorchy road alongside Lake Wakatipu. Passing Glenorchy you will drive through the aptly named Paradise before entering the Mt Aspiring National Park, which hosts the beginning of the Routeburn track. The smooth, flat path will take you through spectacular beech forest where you may spot the Mohua (yellowhead) and Rifleman birds flitting through the trees. The track follows the Routeburn River to the west as it roars through a breathtaking gorge. You will climb a gradual ascent on your walk through the 130-million-year-old forest towards snow-capped peaks, as your guides share their knowledge of the historical significance of the track and its local flora and fauna.

It is important you read and understand the risks associated with this activity. For more information see [here](#).

Your accommodation: Scenic Suites Queenstown

Scenic Suites Queenstown offers guests exquisite style and comfort, with a selection of rooms having spectacular views over Lake Wakatipu and the Southern Alps. The hotel prides itself on its 4-star hospitality that will make your stay in Queenstown even more memorable.



Day 10



Queenstown to Wanaka

Leaving Queenstown you'll drive over New Zealand's highest sealed road, the Crown Range before arriving into the resort town of Wanaka.

Walking tracks in and around Wanaka

There are some excellent walks in and around Wanaka. The information below is provided by the Department of Conservation. Located in Wanaka is a Department of Conservation information centre and you can get updates on track conditions and suitability plus you can learn about the area, its natural history and its people. Listed below are a selection of short walks but check with the Department of Conservation information centre for weather conditions, track suitability and conditions first. Outlet Track

This is a local favourite as it is an easy walk suitable for all ages and abilities. It begins from Wanaka town centre and takes you around picturesque Lake Wanaka to the outlet to the Clutha River and on to Albert Town. This track can also be explored by bike.

Distance: 3 km one way. Completion Time: 1 hour one way.

Mount Iron Track

This very popular, close-to-Wanaka-town loop walk suits all ages and abilities and offers great views from the summit.

Distance: 4.5 km. Completion Time: 1.5 hour.

Diamond Lake and Rocky Mountain walks

These two excellent walks in the Diamond Lake Conservation Area give wonderful views of the surrounding alps and Lake Wanaka.

Distance: 2km - 7 km depending on trail. Completion Time: 45 minutes - 3 hours depending on trail.

Rob Roy Glacier Track

Rob Roy Valley is a good entry point to an area of spectacular alpine scenery, snowfields, glaciers, sheer rock cliffs and waterfalls. The road to this track is unsealed and unsuitable for rental cars, but transportation to the beginning of the walk can be arranged.

Distance: 10 km. Completion Time: 3 - 4 hours return. There is avalanche danger during winter and spring (June-November) on the Rob Roy Track.

Roy's Peak Track

The most famous walk in the Wanaka area, this steep walk climbs 1,500m on a well-formed track with the most spectacular views of Lake Wanaka, its islands, bays, and the mighty snow-capped mountains of the Southern Alps, including Mount Aspiring.

Distance: 16 km return via the same track. Completion Time: 5 - 6 hour return. This track is closed from the 1st of October - 10th November each year. In winter alpine equipment (such as crampons) are required.

Isthmus Peak Track

A long, steady climb that rewards walkers with spectacular, panoramic views of Lake Wanaka and Lake Hawea as well as the mountains of the Southern Alps.

Distance: 16 km return via the same track. Completion Time: 5 - 6 hour return. This track is closed from the 20th of November - 20th December each year. This track is not recommended in winter due to snow and ice build up on the track.

SUGGESTED ACTIVITY - Lake Cruise and Island Nature Walk with Eco Wanaka

Lying close to the centre of Lake Wanaka is Mou Waho Island Nature Reserve. A unique glacial remnant of the last ice age, the island is also the historic site of early shipbuilding and used to be a stopping place for the steamers and log rafts that once plied the lake. Accessible from Wanaka by a 35-minute boat cruise, the landing is on the eastern side of the island where the remnants of the early settlement remain; a stone wharf and a hut. A well-formed track leads from the landing and climbs steadily through native bush to near the top of Tyrwhitt Peak. Just before the top, we see Arethusa Pool, a small lake on the island with small islands in it - very intriguing! From the top, we have a sweeping 360-degree view of Lake Wanaka, its surrounding mountains and valleys, and below Arethusa Pool. The perfect spot to stop for tea or coffee. Going back down the track gives us more time to take in our surroundings, listening to and watching the lively bird-life, and just enjoying this unique wildlife reserve. You will feel well rewarded as you re-join the boat for the cruise back to Wanaka. Total cruise time is 1.5 hours. The trip runs subject to weather and lake conditions. Depending on the planting season, you can help The Reforestation of Mou Waho by planting a tree.

Your accommodation: Clearbrook Motel and Serviced Apartments

Clearbrook offers luxury apartment style and townhouse accommodation options and is located just metres from Wanaka's main street and its majestic lake front.



Day 11



Wanaka to Aoraki Mt Cook National Park

Passing through the Clutha River valley you arrive into the quaint village of Tarras, which has a number of boutique stores and a lovely cafe. You then traverse the Lindis Pass, one of New Zealand's highest roads with the summit reaching 971 metres. The tussock covered hills offer an unusual contrast as you pass from Central Otago into the Mackenzie Basin. The towns of Omarama and Twizel are the last stops before you arrive at Lake Pukaki and take the Mt Cook Highway along the shores to the village. In Aoraki Mt Cook Village a myriad of activities are available from scenic flights with glacier landings, to kayaking on a glacial lake and a host of walks to suit all abilities. At The Hermitage Hotel the Sir Edmund Hillary Alpine Centre is a must see.

SUGGESTED ACTIVITY - Glacier Highlights - Scenic Flight with Glacier Landing

Take in the spectacular Southern Alps, including New Zealand's highest peak Aoraki Mt Cook and the constantly changing glacial landscape. See the Hochstetter Icefall as you fly beneath the face of Mount Cook then along the length of the Tasman Glacier before landing on the glacier itself. Experience the silence of the mountains, broken only by the rumbling of an avalanche and creaking of the snow and ice beneath your feet. You'll take off again for another incredible flight over peaks, ice falls, alpine lakes and climbing huts. This flight offers fantastic close-up views of Aoraki Mount Cook, Mt Tasman and the Southern Alps from Aoraki Mount Cook National Park. It is important you read and understand the risks associated with this activity. For more information please see [here](#).

Your accommodation: Mt Cook Motel

Mt Cook Motel, nestled in the heart of Mt. Cook Village, offers spacious self-contained units that provide comfort and convenience. Each unit is surrounded by breathtaking alpine mountain views, making it the perfect retreat for nature lovers and adventurers alike.



Day 12



Glacier Explorers

Experience 500-year-old icebergs up close on the Aoraki-Mt Cook terminal lake. The Glacier Explorers tour is the only one of its kind in New Zealand and one of only three in the world! Very few glaciers terminate into lakes and even fewer of them are accessible. See towering ice cliffs and floating icebergs from the safety of a specially designed boat. These boats provide a safe way to view unseen and inaccessible areas of New Zealand's largest glacier The Tasman.

Walking Track in Aoraki-Mt Cook National Park

Aoraki-Mt Cook Village offers a variety of short scenic walks suitable for all ages and fitness levels. Start your adventure at the Department of Conservation Information Centre, where you can learn about track conditions, local history, and the area's wildlife. Here are a few popular walks to explore: Bowen Bush Walk: 10-minute return Glencoe Walk: 10-minute return Red Tarns Track: 2-hour return Kea Point Walk: 2-hour return Sealy Tarns Track: 3 - 4 hours return

Your accommodation: Mt Cook Motel

Mt Cook Motel, nestled in the heart of Mt. Cook Village, offers spacious self-contained units that provide comfort and convenience. Each unit is surrounded by breathtaking alpine mountain views, making it the perfect retreat for nature lovers and adventurers alike.



Day 13



Aoraki-Mt Cook National Park to Christchurch

Leaving Aoraki Mt Cook National Park, travel a short distance for a stop at the visitor centre on the southern shores of Lake Pukaki. Learn about the formation of the region and take in the spectacular views of Aoraki-Mount Cook. Along the way you'll come to Lake Tekapo which also displays the same reflective qualities as Lake Pukaki, making the waters bright turquoise. It's a great place to take a scenic flight, soak in a hot spring or just marvel at the magnificent views. From here you travel through Burkes Pass and into the rich farming valley that surrounds Geraldine. Continue across the vast Canterbury Plains to Christchurch.

SUGGESTED ACTIVITY - Christchurch Gondola

In the Heathcote Valley, just a 20-minute drive from the heart of Christchurch City, ride the Christchurch Gondola for nearly a kilometer to the collapsed rim of an extinct volcano, which exploded six million years ago. Take in the spectacular panoramic views of the central city, Lyttelton Harbour, Banks Peninsula, Canterbury Plains, and the distant peaks of the Southern Alps. Wander the summit complex, enjoy a coffee or lunch in the cafe, and choose one of many nature walks to explore or visit the Christchurch Discovery Ridge, a dramatic reconstruction of the history of the Port Hills and Christchurch.

SUGGESTED ACTIVITY - Discover Christchurch Afternoon Tour

A half-day sightseeing tour of Christchurch highlighting both the damage to the city inflicted by several large earthquakes in 2010 and 2011 and the rebuild which is currently in progress, together with the surviving beauty of the city and the historical landmarks. Experience the grand architecture, beautiful gardens, and scenic viewpoints on a half-day city tour of Christchurch.

SUGGESTED ACTIVITY - Willowbank Wildlife Reserve

Nowhere else in New Zealand will you find such a wide range of New Zealand wildlife so close to you. Willowbank provides you with a "Kiwi Guarantee" and is home to New Zealand's largest and most accessible Kiwi viewing area. With this unique experience, you will see New Zealand's natural splendor firsthand, and view Kiwis that are not hidden behind glass. You will explore one of the most complete selections of New Zealand native and introduced wildlife in natural bush surroundings. Much of the Willowbank wildlife wander free and can be petted and fed.

Choose to explore the reserve yourself, or for an up-close Kiwi experience, you can take a guided tour.

Your accommodation: Quest on Cambridge

Quest on Cambridge serviced apartment-style hotel rooms offer guests a relaxed and comfortable Christchurch accommodation experience. Each room has an open-plan living area, a fully equipped kitchen, and natural light. Quest on Cambridge is a short walk from the south shopping centre and to the Botanic Gardens.



Day 14



Return Your Vehicle to Christchurch Airport

It's time to return your rental car and let the South Island journey come to an end. If time allows spend the day exploring more of Christchurch, we'd suggest a leisurely drive up the Port Hills for some great sites and then over to the harbour of Lyttelton, before circling through the tunnel and back to the airport to continue your journey home.

Tour details

Departures:	Daily
Tour type:	South Island Self Drive
Starts:	Christchurch
Finishes:	Christchurch
Tour length:	14
Accommodation:	Motels
Car/transport type:	

Included activities

Includes	Private airport transfers
Includes	Glacier Explorers Tour, Mt Cook National Park
Includes	Routeburn Track Day Hike, Queenstown
Includes	Real Journeys Milford Sound overnight cruise
Includes	Milford Track Guided Day Hike

Accommodation summary

Day 1	Quest on Cambridge
Day 2	Motel on York
Day 3	Motel on York
Day 4	Lakefront Lodge
Day 5	Lakefront Lodge
Day 6	Overnight Boat in Milford Sound
Day 7	Scenic Suites Queenstown
Day 8	Scenic Suites Queenstown
Day 9	Scenic Suites Queenstown
Day 10	Clearbrook Motel and Serviced Apartments
Day 11	Mt Cook Motel
Day 12	Mt Cook Motel
Day 13	Quest on Cambridge