

## Southern Natural Wonders Tour

Indulge in an exclusive luxury escape with the Southern Natural Wonders Tour, a meticulously crafted journey through New Zealand's most stunning natural landscapes. Begin in Queenstown, the adventure capital, before exploring the serene shores of Lake Te Anau and venturing into Fiordland National Park to cruise the iconic Piopiotahi - Milford Sound, surrounded by towering peaks and cascading waterfalls. Experience the majestic beauty of Aoraki – Mount Cook National Park, where alpine meets serene glacial vistas. Journey west to Franz Josef Glacier, marvelling at ancient ice formations nestled within temperate rainforests, then unwind in premium lodges that blend comfort with breathtaking views. Traverse the Haast Pass's wild beauty en route to Wanaka's tranquil alpine scenery, before concluding with a stay in Arrowtown's charming heritage village. This bespoke itinerary balances immersive nature experiences with exceptional accommodation and personalised service, delivering an unforgettable South Island luxury adventure.

Starts in: Christchurch  
Finishes in: Christchurch  
Length: 14days / 13nights  
Accommodation: Boutique Lodges & Hotels  
Can be customised: Yes

This itinerary can be customised to suit you perfectly. We can add more days, remove days, change accommodations, mix it up, add activities to suit your interests or simply design and create something from scratch. Call us today to get your custom New Zealand itinerary underway.



### Inclusions:

Includes: Late model rental cars

Includes: Unlimited kms

Includes: Airport & ferry terminal rental car fees

Includes: Comprehensive tour pack (detailed itinerary, driving instructions, map/guidebooks, brochures)

Included activity: Private Transfer Christchurch International Airport to Christchurch Accommodation

Included activity: Dinner onboard the Christchurch Restaurant Tram

Included activity: One Hour Private Tub with Waiho Hot Tubs

Included activity: TranzAlpine Scenic Train: Greymouth to Christchurch Scenic Plus with Great Journeys NZ

Included activity: Private Transfer from Christchurch Accommodation to Christchurch Airport with Christchurch Touring Company

Included activity: Private Punting on the Christchurch Avon River

plus much more...

Includes: Fully inclusive rental car insurance (excess may apply)

Includes: GPS navigation

Includes: Additional drivers

Includes: 24/7 support while touring New Zealand

Included activity: Electronic Travel Guide and In-Country Support App

Included activity: TSS Earnslaw Cruise and Walter Peak Gourmet BBQ Lunch

Included activity: Franz Josef Glacier Adventure with Franz Josef Glacier Guides - Lunch Included

Included activity: Private Transfer Christchurch Train Station to Accommodation

Included activity: Kai Safari with Amiki Cultural Food Tours

Included activity: Mt Cook Lakeside Retreat - Dusk to Dark Stargazing

## Day 1



### Private Transfer Christchurch International Airport to Christchurch Accommodation

On arrival, you will be met by a private driver and transferred to your Christchurch accommodation.

### Welcome to Christchurch City

Christchurch New Zealand's garden city is steadily being transformed into a vibrant urban destination. Encompassing a large green belt, it is known for its wide tree lined avenues and lush gardens. A great way to explore the city or easy way to see the sights or ride the historic trams across town to the renowned botanic gardens and the unique cardboard Transitional Cathedral, that's right it is built of cardboard!

### Dinner onboard the Christchurch Restaurant Tram

A truly unique dining experience in the heart of Christchurch. You'll board New Zealand's only dining tram for an unforgettable moving four-course restaurant experience. Enjoy a curated fine dining-style menu while taking in the city sights on your journey through the streets of central Christchurch. This experience includes a meal with multiple courses as the tramway route passes New Regent Street, the Avon River, High Street, and Victoria Square.

### Your accommodation: Hotel Montreal

A true original, Hotel Montreal is a unique, luxury escape in the heart of Christchurch city. Hotel Montreal is often recognised for the five-star comfort and convenience it affords those passing through the Garden City.

Meals included:      Speciality Dinner



## Day 2



### Private Punting on the Christchurch Avon River

Relax and enjoy the tranquil Christchurch Botanic Gardens as you are expertly guided along the Avon River on a classic punting tour. You will be set aboard a handcrafted flat-bottomed boat, poled along by your punter in Edwardian attire from the platform at the rear of the boat. This private punt allows you to have the boat to yourselves for a 30-minute romantic ride offering an extra special experience. You will enjoy the spectacular flora that the Garden City is famous for from a unique perspective amidst fresh air.

### Kai Safari with Amiki Cultural Food Tours

Immerse yourself in the vibrant atmosphere of the new city while exploring its emerging foodie scene. Learn about the lives of early Māori and their contemporary lifestyle. Uncover hidden gems and hear stories of how Ōtautahi-Christchurch envisions the future. Enjoy visits to beloved modern New Zealand restaurants, where you can sample seasonal shared plates made from local produce. Indulge in new favourite dishes, savouring a variety of local food and beverages, each with its own unique story that highlights the region's offerings..

### Your accommodation: Hotel Montreal

A true original, Hotel Montreal is a unique, luxury escape in the heart of Christchurch city. Hotel Montreal is often recognised for the five-star comfort and convenience it affords those passing through the Garden City.

Meals included:      Breakfast





## Day 3



### Collect Rental Car

Choose a car to best suit your needs from our fantastic rental car range. From compact economy, hatchbacks to prestige SUVs.&nbsp;

---

### Christchurch to Aoraki-Mt Cook National Park

Drive through the heart of the South Island, crossing the vast Canterbury plains. Catch your breath in Geraldine before continuing through Fairlie. Ascending Burkes pass you'll come to the picturesque town of Lake Tekapo. Follow the road and take in the view of Aoraki-Mt Cook (New Zealand's tallest mountain) from the shores of Lake Pukaki, known for its glacier fed turquoise blue colour. Continue along the lake to your final destination Aoraki-Mt Cook Village.

---

### Aoraki-Mt Cook National Park

At 3754m Aoraki-Mt Cook is Aotearoa-New Zealand's highest mountain, located deep in the heart of the Southern Alps. As well as its impressive beauty, Aoraki-Mt Cook National Park is also home to a huge range of awe-inspiring sights and activities. Take to the air with Mt Cook Ski Planes for a scenic flight that includes a glacier landing. At around 27 kilometres long the Tasman Glacier is New Zealand's longest and a Glacier Explorers tour allows you to see its unique features up close.

There are many short hikes in and around the park and these are well signposted around the village. Those with an interest in the night sky should take a Big Sky Stargazing tour with the Hermitage Hotel. The region is considered to have one of the clearest night skies in the world and is one of the few gold-rated dark sky reserves worldwide.

Visit the Sir Edmund Hillary Alpine Centre for insight into this region's mountain climbing history. You'll also learn of Sir Ed's incredible achievements and his dedication to helping others around the world.

---

### Mt Cook Lakeside Retreat - Dusk to Dark Stargazing

Located in the heart of the Aoraki Mackenzie International Dark Sky Reserve, with no light pollution.&nbsp;

Marvel as the sun dips behind the grand Southern Alps during our Dusk to Dark excursion. Join us on the Lavender Lawn at the magical twilight hour and indulge in the awe-inspiring panoramas of Aoraki/Mount Cook, offering an ideal backdrop for capturing stunning photographs. As darkness envelops the sky, step into the entrancing realm of the Pukaki Observatory at Mt Cook Lakeside Retreat, where you'll be welcomed with a glass of wine or a dram of whisky to set the mood. Our knowledgeable astronomer will then guide you through a celestial exploration using a high-powered laser pointer and a telescope mounted on a pier. Delve into the enigmas of constellations and their mythologies, stars, star clusters, nebulae, planets, the Moon, and more, while also relishing real-time views of cosmic wonders on a large screen via a camera connected to the telescope. Whether you're a novice to stargazing or a seasoned enthusiast, our guided tour ensures an unforgettable journey beneath one of the world's darkest and clearest skies. This extraordinary experience offers a rare opportunity to stargaze within the renowned Aoraki Mackenzie International Dark Sky Reserve.

---

### Your accommodation: Mt Cook Lakeside Retreat

Mt Cook Lakeside Retreat offers exclusive accommodation, set on the shores of Lake Pukaki overlooking Mt Cook National Park. After a day of exploring relax in your private peaceful outdoor spa pool.

Meals included:            Breakfast, Speciality Dinner



---

## Day 4



### Glacier Explorers

Experience 500-year-old icebergs up close on the Aoraki-Mt Cook terminal lake. The Glacier Explorers tour is the only one of its kind in New Zealand and one of only three in the world! Very few glaciers terminate into lakes and even fewer of them are accessible. See towering ice cliffs and floating icebergs from the safety of a specially designed boat. These boats provide a safe way to view unseen and inaccessible areas of New Zealand's largest glacier The Tasman.

## Mt Cook Ski Plane & Helicopters - Mt Cook 360 Scenic Flight

Experience Aoraki/Mt Cook and the Tasman, Fox and Franz Glaciers' from a ski plane ! This flight departs from Mt Cook Airport, just a five-minute drive from Mt Cook Village. If you're visiting Mt Cook and exploring the surrounding area, this flight is a perfect addition to your itinerary. This 45-minute flight offers a comprehensive tour of the main geographic features in the Aoraki Mt Cook National Park, circumnavigating Aoraki/Mt Cook, New Zealand's highest peak at 12,349 feet. As the centerpiece of the national park, Mt Cook provides a stunning focal point for this circular flight, showcasing all the iconic geographic features that this region has to offer.

### Your accommodation: Mt Cook Lakeside Retreat

Mt Cook Lakeside Retreat offers exclusive accommodation, set on the shores of Lake Pukaki overlooking Mt Cook National Park. After a day of exploring relax in your private peaceful outdoor spa pool.

Meals included: Breakfast, Speciality Dinner



## Day 5



### Aoraki Mt Cook National Park to Clyde

Twizel, just south of Aoraki Mt Cook was the location of many Lord of the Rings movie scenes and a little further on is Omarama, the gliding capital of New Zealand. Wrinkly Rams is a local cafe with fresh homemade food. The Lindis Pass is one of New Zealand's highest roads with the summit reaching 971 metres. The tussock covered hills offer an unusual contrast as you pass from the Mackenzie Basin and into Central Otago. The first Central Otago settlement you reach is the quaint village of Tarras, which has a number of boutique stores and a lovely cafe. A short drive further along is the historic and scenic Bendigo Reserve, which was one of Otago's original gold mining settlements. Well marked paths will guide you to the remains of stone cottages and other buildings from this bygone era. Cromwell sits at the head of the Kawarau Gorge and the historic old town is well worth the visit, the buildings are now home to quaint shops and cafes. The old town buildings were relocated from the valley that now sits deep under Lake Dunstan.

From Cromwell follow the shores of the Lake Dunstan to the large hydroelectric Dam. The Clyde Dam is New Zealand's largest concrete gravity dam situated near the town of Clyde, consisting of one million cubic metres of concrete. Arriving into the small historic gold mining town of Clyde you will notice many of the original buildings that have become iconic to the town.

### Clyde

A small town in Central Otago, Clyde is tucked into a sheltered basin at the foot of a gorge now flooded by a large concrete hydro dam. Born out of the 1860's gold rush, Clyde is a historic precinct. Many of the original buildings continue to stand and have become iconic to the town. Located in an area renowned first for gold, and then for its stone fruit orchards. Clyde is a popular summer destination due to its hot, dry days. the addition of renowned wineries in the surrounding regions and many cycle trails. We can recommend Monte Christo Winery for an enjoyable drink in the vines, a walk through the townships many boutique stores and an artisan dining experience at Oliver's.

### Your accommodation: Olivers Central Otago Accommodation

Eleven rooms, divided into Stables and Lodge accommodation, superbly blend the old with the new creating a contemporary ambience integrally linked with bygone days. Schist walls, stone floors, rough sawn timber beams and stable doors enhance the 1860s theme while the six Lodge rooms showcase elegant contemporary interiors.

Meals included: Breakfast



## Day 6



## Clyde to Te Anau

Journeying from Clyde, through New Zealand's adventure capital Queenstown, you will follow the shores of Lake Wakatipu, The Remarkables mountain range towers over you as you approach township of Kingston. You'll venture into Southland before crossing the rolling tussock-lands of Mossburn (deer capital of New Zealand) and shortly arriving into Te Anau, gateway to Fiordland National Park.

---

## Te Anau

It is the gateway to Fiordland National Park and a perfect base to visit Piopiotahi-Milford Sound. The Milford Road originates here, and this is arguably one of the most scenic stretches of highway in the country. Te Anau sits on the shores of spectacular Lake Te Anau, which reaches depths of 417 meters. Te Anau Township is the starting point for many walking tracks, including two of New Zealand's Great Walks, the Milford track and the Kepler track. Apart from hiking, you could go kayaking, lake cruising, fishing, or exploring Te Anau Glowworm Caves. You could go for a bike ride alongside the lake towards Lake Manapouri, on a popular Lake to Lake biking route. Along the way, you will pass a bird sanctuary specialising in Takahe, and other native birds.&nbsp;

---

## Pure Wilderness Jet Boat with Fiordland Jet

Jet boat down the Waiau river, across Lake Manapouri, to the ancient forest of the Fiordland National Park. Enjoy the thrill of jet boating down the majestic trout-filled Waiau River, to the serene Lake Manapouri. Step foot into the Fiordland National Park and go for a short walk while learning about the ancient beech forest and ferns. Your jet boat ride includes a number of stops at the exact locations of the filming the "Fellowship of the Ring" on the Waiau or "Anduin River". The driver will tell you the inside story of the filming the Lord of the Rings on this river. The trip will also include some thrilling 360 degree turns and spins as well as interesting interpretation about the flora and fauna and the local European and Māori history.

---

## Ata Whenua - Shadowland Film at Fiordland Cinema

Ata Whenua refers to the southwestern coast of New Zealand and translates to English as "Shadow Land". This breathtaking short film will take you on an unforgettable journey through one of the most awe-inspiring landscapes on earth, Fiordland National Park. Shot by award-winning cinematographers with outstanding musical composition, this is the next best thing to a scenic flight over this spectacular wilderness.

---

## SUGGESTED ACTIVITY - Te Anau Wildlife Centre

Fiordland is home to a wonderful variety of native birds, whose habitat ranges from the rugged mountain and forest environments to the wild west coast seashore. The Te Anau Wildlife Centre is the ideal setting to learn about some of Fiordland's wildlife. The centre offers the opportunity to view the rare flightless takahē, now restricted to the tussock grasslands of the Murchison Mountains of Fiordland. Native waterfowl, weka, parakeets, tui, kea, kākā and pigeons are all part of the setting. The centre's main aviary houses a number of native birds. The native pigeon, tui, kea and kaka or bush parrot can be seen here. Another aviary houses native parakeets.

---

## Your accommodation: Fiordland Lodge

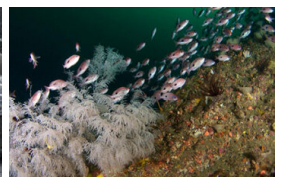
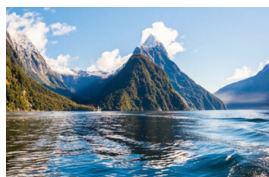
Set in a World Heritage area Fiordland Lodge offers the discerning traveller comfort and privacy. The elegance and splendour of the Lodge is mirrored in the breathtaking views of Lake Te Anau and Fiordland. Private and serene, the Lodge is perfect for relaxation, or as a base for your Fiordland experience.

Meals included:            Breakfast, Dinner



---

## Day 7



## Milford Sound Overnight Cruise on the Fiordland Jewel with Fiordland Discovery - Te Anau Return - Te Anau

Cruise Milford Sound in luxury on board the Fiordland Jewel. This purpose built luxury boutique catamaran has nine fully heated and air-conditioned cabins with king size beds and ensuite bathrooms. With no more than 20 passengers on the boat, you will have plenty of space to relax and take on the spectacular views. Milford sound is simply like no other place on earth, with impressive peaks that tower hundreds of metres both above and below sea level, cascading waterfalls and pristine rainforests. Seals, dolphins and penguins can be seen from the boat, and rare black coral, lobsters and schools of fish can be viewed in HD from the boats remote operated vehicle.

On day one you will cruise down the south side of the fiord, past Bowen Falls, Sinbad Gully, the world-renowned Mitre Peak, Mt Pembroke, Bridal Veil Falls and Fairy Falls. If weather permits, you will cruise into the mouth of the fiord past Anita Bay, and head into the Tasman Sea for a glimpse of the West Coast, before returning into the sound. You will then cruise up the north side, past Dale Point, the Piopiotahi Marine Reserve, Seal Rock, Stirling Falls, The Lion and the Cascade Range. After a few hours, you will anchor at Harrison's Cove or Deepwater Cove for the night. Here you will have the opportunity to explore nearby in a kayak, before returning to the boat for drinks and dinner. On day two you will watch the sunrise over breakfast, served at 7-8am, before returning to the terminal.

---



## Your accommodation: Fiordland Jewel

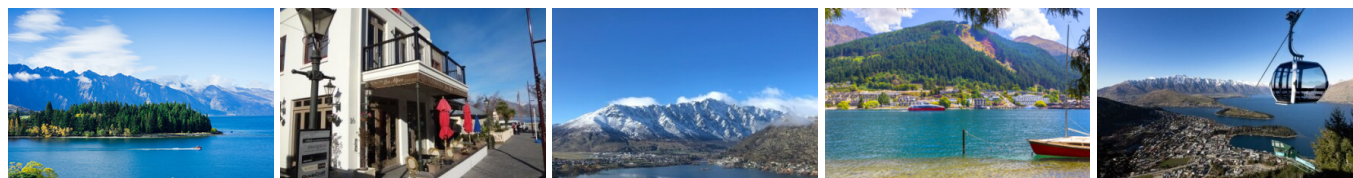
The Fiordland Jewel is a luxury boutique catamaran built with nine comfortable cabins. Enjoy the natural wonders of Milford Sound at dawn, dusk or underneath the stars.

Meals included: Breakfast, Dinner



---

## Day 8



### Te Anau to Queenstown

Journey across expansive tussock lands en route to Queenstown. Pass through Mossburn, renowned as the deer capital of New Zealand, and continue through the picturesque Southland countryside. As the road begins to trace the edge of Lake Wakatipu, marvel at the breathtaking views from the Devil's Staircase. Finally, approach Queenstown, the adventure capital of New Zealand, with the Remarkables mountain range standing majestically in the backdrop.

---

### Queenstown

Queenstown known in Māori as Tāhuna, is home to many adrenaline-inducing activities. Nestled on the shores of Lake Wakatipu, this alpine town has very distinct seasons, and most adrenaline-filled activities can be accessed year-round. Queenstown is home to jet boating, bungee jumping, rafting, skydiving, paragliding, and even indoor thrills. If you want that rush - head out on the Shotover Jet, dive off the Nevis Bungy, freefall on the Canyon Swing, or Zip line the Gondola. While arguably the brightest gem in New Zealand's crown, Queenstown offers far more than an action-packed getaway. If you're looking for a slightly slower pace, there are plenty of recreational activities, including hiking and biking trails to explore, guided tours, boat cruises, scenic flights, or spa and wellness options to help you get away. Head to the lakefront, eat at one of the al fresco eateries, and soak up the local vibes; catch a ride on the iconic 100-year-old steamship the TSS Earnslaw; or take the Skyline Gondola and enjoy bird's-eye views of the Remarkables mountain ranges and Lake Wakatipu. Pack a picnic and go for a hike, only 20 minutes from Central Queenstown, Coronet Peak opens for summer sightseeing. You can ride the Peak Gondola to the top for panoramic views and hike the trails, or go for a bike ride on many excellent biking trails. In winter, Queenstown becomes a world-class winter resort, with four ski areas and a range of activities, bars, restaurants, and ways to relax and unwind.

---

### Gondola and 3 Luge Rides with Skyline Queenstown

In the heart of Queenstown, located 450 metres above town in the Ben Lomond Scenic Reserve is the Skyline Complex. A gondola ride to the summit makes for awe-inspiring views of the city surround. Arrive at the complex and wander the outside viewing decks for a picture perfect outlook. Then onto the Luge! The 800 metre luge track offers an exhilarating journey through banked corners, tunnels and dippers.

---

### Kiwi Park Entry

Explore the 5-acre oasis at the Kiwi Park. A family-owned and operated wildlife centre in the heart of Queenstown, dedicated to saving New Zealand's endangered wildlife species. The Kiwi Park has over 20 species of native wildlife on display, including New Zealand's national icon, the Kiwi, and the living fossil, the Tuatara.

---

## Your accommodation: Queenstown Park Boutique Hotel

Queenstown Park Hotel is a boutique hotel with a modern romantic style in the heart of New Zealand's adventure capital. Set in peaceful parkland, savour views of Queenstown's majestic mountains. Enjoy easy access to the vibrant town centre where shopping, cafes and nightlife nestled on the shores of spectacular Lake Wakatipu.

Meals included: Breakfast



---

## Day 9



## Half Day Gibbston Wine Tour with Black NZ

Enjoy wine tastings at 4 or more vineyards in the Gibbston region with an informative and entertaining commentary about the gold mining history and pioneers of the wine industry. Can be combined with a visit to the famous A.J.Hackett Kawarau Bungy Bridge for a leap of faith.

### Your accommodation: Queenstown Park Boutique Hotel

Queenstown Park Hotel is a boutique hotel with a modern romantic style in the heart of New Zealand's adventure capital. Set in peaceful parkland, savour views of Queenstown's majestic mountains. Enjoy easy access to the vibrant town centre where shopping, cafes and nightlife nestled on the shores of spectacular Lake Wakatipu.

Meals included: Breakfast



## Day 10



### TSS Earnslaw Cruise and Walter Peak Gourmet BBQ Lunch

Enjoy a quintessential Kiwi experience a delicious barbeque lunch and a farm tour in a stunning lakeside setting. First, take a scenic cruise from Queenstown to Walter Peak High Country Farm on board the vintage steamship TSS Earnslaw, one of the last remaining fully functional coal-fired passenger ships in the southern hemisphere.

Disembark and take in the picturesque shores of the Station. Relax on the lakeside terrace at the Colonel's Homestead Restaurant and savour the aromas of the best local produce being cooked on the grill. The seasonal menu has plenty to choose from salads, vegetables and succulent meat with plenty of delicious dietaries on offer as well. Finish your meal with a scrumptious dessert before joining an entertaining farm demonstration or exploring the beautiful lakeside gardens.

### Your accommodation: Queenstown Park Boutique Hotel

Queenstown Park Hotel is a boutique hotel with a modern romantic style in the heart of New Zealand's adventure capital. Set in peaceful parkland, savour views of Queenstown's majestic mountains. Enjoy easy access to the vibrant town centre where shopping, cafes and nightlife nestled on the shores of spectacular Lake Wakatipu.

Meals included: Breakfast, Lunch



## Day 11



### Queenstown to Franz Josef Glacier via Wānaka

From Queenstown you'll cross the Crown Range, the highest sealed road in New Zealand to arrive in the Alpine town of Wānaka, gateway to Mt Aspiring National Park. Skirting the shores of both Lake Wanaka and Hawea, you will enter the small town of Makarora. Stop at Blue Pools for a 1-hour return walk through the native beech forest to a glacier-fed swimming hole. Continue on through the remote seaside settlement of Haast before heading up the wild West Coast highway you pass through ancient temperate rainforests while getting sneak peeks of the wild coast beaches occasionally. Paringa Salmon Farm is worth a stop to stretch your legs, feed the fish, and stop for lunch and refreshments. Keep heading North and be sure to enjoy the view of the ever-changing towering snowcapped Southern Alps Mountain Range. Fox Glacier welcomes you first, then comes your destination for the night Franz Josef township.

### Franz Josef

Franz Josef, named after both the local village and the nearby glacier, holds special significance in Māori culture as "Ko Roimata o Hine Hukatere" – The Tears of the Ice Maiden. This rare glacier is one of only three in the world that descends from alpine heights into a temperate rainforest, almost reaching sea level. New Zealand is home to two of these unique glaciers, Franz Josef and Fox Glacier, both highly accessible and popular with visitors. The best ways to experience the glacier are through scenic flights or, for the adventurous, a heli-hike. You can also enjoy glacier views with a short drive from the village and walking tracks. Beyond the glacier, Franz Josef offers a wealth of adventure activities and beautiful forest and alpine walks, making it a must-visit destination.



## One Hour Private Tub with Waiho Hot Tubs

Relax and unwind in the soothing comfort of fresh, warm water and aromatic wood smoke. Enjoy your own private tubs, nestled in a lush rainforest setting on New Zealand's West Coast. These wood-fired hot tubs combine the soothing comfort of warm water with the unique atmosphere of wood smoke to give you an unforgettable experience.

---

### Your accommodation: Westwood Lodge

Westwood is a purpose built lodge, crafted entirely from wood and exquisitely decorated throughout. The lounge is the place to meet to watch the Southern Alps turn a soft pink in the setting sun.

Meals included: Breakfast



---

## Day 12



### Franz Josef Glacier Adventure with Franz Josef Glacier Guides - Lunch Included

This exciting experience is for anyone seeking a private on-ice adventure. This activity includes a longer flight than most (10 minutes) as you fly over the glacier's neve area. On landing, the knowledgeable and experienced qualified NZMGA Hard Ice Guide will demonstrate their skills on the glacier. With no set tracks and a maximum of 4 guests per guide, guests will be taken through spectacular ice formations and crevasses. Guides will cater to the group's preferences, making this a truly bespoke experience. Should the opportunity present itself, guests will be able to explore different ice formations by walking through caves, and if you wish have a go at ice climbing.

All equipment required for this adventure is included in the cost, plus the helicopter transfers lunch and drinks. It is important you read and understand the risks associated with this activity prior to travel. For more information, please see [here](#).

---

### Your accommodation: Westwood Lodge

Westwood is a purpose built lodge, crafted entirely from wood and exquisitely decorated throughout. The lounge is the place to meet to watch the Southern Alps turn a soft pink in the setting sun.

Meals included: Breakfast, Lunch



---

## Day 13



### Franz Josef to Greymouth Train Station

Head north along the mighty West Coast highway you pass through ancient temperate rainforests while getting sneak peeks of the wild coast beach occasionally. Whataroa is the next town where you can see one of the world's rarest birds, the Kōtuku - White Heron. The Kōtuku nest at the Waitangi Roto Nature Reserve, only accessible with a guided tour from October to March. The next town is Ross which is the site of an old gold mining settlement where the local information centre offers you the chance to pan for gold. Hokitika is a great place to explore craft and gift stores and head to the coast and take in the endless sea views. The Pounamu-Greenstone on offer in Hokitika is probably some of the best you will see in the country. Continue on to Greymouth, the largest town on the West Coast and the starting point for the next leg of your journey the TransAlpine Scenic Train. Drop your rental car at the Greymouth Train Station depot located at the train station building before boarding your train to Christchurch.

---

### Drop Rental Car at Greymouth Train Station depot today

This morning drive to the train station and leave your car parked. Remove all personal items including GPS or Kruse units and lock the car. Make sure it is full of fuel to avoid any charges. Hand the keys to the train station check in staff and tell them Europcar will be collecting. Europcar staff will collect the rental car later from the train station.

---



## TranzAlpine Scenic Train: Greymouth to Christchurch Scenic Plus with Great Journeys NZ

Great Journeys New Zealand's Scenic Plus carriage provides comfort and vast panoramic views, making our TranzAlpine scenic train journey the perfect way to explore coast-to-coast through the 'Great Divide' and the indomitable spine of mountains that partitions New Zealand's South Island. Scenic Plus offers an all-inclusive experience on the unique TranzAlpine scenic rail journey to invigorate all the senses! Feast your eyes on epic scenery while you savour regionally inspired cuisine paired with sumptuous wine and beer all from the comfort of your luxurious seat &ndash; a hosted dining experience like no other. Quite simply, we have done everything we can to ensure you feel at peace as you sink back in your seat and soak up the scenery.

---

### Private Transfer Christchurch Train Station to Accommodation

On arrival at the Christchurch train station, you will be met by a private driver and transferred to your accommodation.

---

### Your accommodation: Hotel Montreal

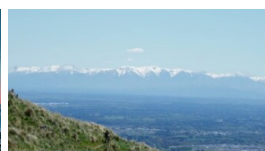
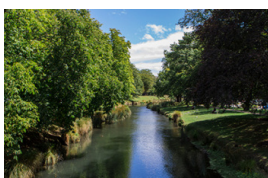
A true original, Hotel Montreal is a unique, luxury escape in the heart of Christchurch city. Hotel Montreal is often recognised for the five-star comfort and convenience it affords those passing through the Garden City.

Meals included: Breakfast, Lunch



---

## Day 14



### Private Transfer from Christchurch Accommodation to Christchurch Airport with Christchurch Touring Company

A private transfer will collect you from your accommodation and transfer you to Christchurch Airport in time for your departing flight.

---

### Farewell from Aotearoa-New Zealand

Bid farewell to New Zealand, taking with you unforgettable memories of its breathtaking landscapes and incredible adventures. In Maori, it is said mā te wā, which is not goodbye, it is see you soon!

---

---

## Tour details

Departures:	Daily
Tour type:	Self Drive Tour (FTNZ ONLY)
Starts:	Christchurch
Finishes:	Christchurch
Tour length:	14
Accommodation:	Boutique Lodges & Hotels
Car/transport type:	

---

## Included activities

Includes	Private airport transfers
Includes	Private train station transfers
Includes	TranzAlpine Train from Greymouth to Christchurch
Includes	Real Journeys Milford Sound Cruise

---

## Accommodation summary

Day 1	Hotel Montreal
Day 2	Hotel Montreal
Day 3	Mt Cook Lakeside Retreat
Day 4	Mt Cook Lakeside Retreat
Day 5	Olivers Central Otago Accommodation
Day 6	Fiordland Lodge
Day 7	Fiordland Jewel
Day 8	Queenstown Park Boutique Hotel
Day 9	Queenstown Park Boutique Hotel
Day 10	Queenstown Park Boutique Hotel
Day 11	Westwood Lodge
Day 12	Westwood Lodge
Day 13	Hotel Montreal