



## South Island Spectacular

Starting and finishing in the alpine resort of Queenstown, this 15 day tour explores the best of the South Island, going as far north as the remarkable Pancake Rocks at Punakaiki. Included are two of the most scenic road trips in the world, the Milford and West Coast Roads as well as activities that will take you to breath-taking locations. Have your camera at the ready!

Starts in: Queenstown  
Finishes in: Queenstown  
Length: 15days / 14nights  
Accommodation: Hotel 4 star  
Can be customised: Yes

This itinerary can be customised to suit you perfectly. We can add more days, remove days, change accommodations, mix it up, add activities to suit your interests or simply design and create something from scratch. Call us today to get your custom New Zealand itinerary underway.



### Inclusions:

Includes: Late model rental cars

Includes: Unlimited kms

Includes: Airport & ferry terminal rental car fees

Includes: Comprehensive tour pack (detailed itinerary, driving instructions, map/guidebooks, brochures)

Included activity: Private Transfer Queenstown Airport to your Accommodation

Included activity: Castle to Cruise Tour and Penguin Place

Included activity: TSS Earnslaw Cruise and Walter Peak Gourmet BBQ Dining

Included activity: Wanaka Boutique Wine Tour with Wanaka Wine Tour

Included activity: TranzAlpine Scenic Train: Greymouth to Christchurch

Included activity: Christchurch Gondola

: 14 breakfasts, 1 lunch, 1 special dinner

Includes: Fully inclusive rental car insurance (excess may apply)

Includes: GPS navigation

Includes: Additional drivers

Includes: 24/7 support while touring New Zealand

Included activity: Electronic Travel Guide and In-Country Support App

Included activity: Milford Sound Cruise and picnic lunch with RealNZ

Included activity: Dart River Wilderness Jet

Included activity: Twin Glacier Scenic Helicopter Flight with The Helicopter Line

Included activity: Private Transfer Christchurch Train Station to your accommodation

Included activity: Glacier Explorers

## Day 1



### Private Transfer Queenstown Airport to your Accommodation

On arrival you will be met by a private driver and delivered to your Queenstown accommodation.

### Welcome to Queenstown

Renowned for its adrenaline inducing activities Queenstown is synonymous with adventure. Parked on the shores of Lake Wakatipu this small alpine town is nestled below soaring vistas of The Remarkables Mountain Range. While arguably the brightest gem in New Zealand's crown, Queenstown offers far more than an action-packed getaway. Spend time on the Gibbston wine trail and end with a meal at Michelin star chef Josh Emett's restaurant, Rata. Take a trip down memory lane on a 100 year old steamship the TSS Earnslaw. Soak in the scenery on your walk around the lake, or venture further afield into Fiordland National Park. Head over the hill to resort town Wanaka, or re-live scenes from Lord Of The Rings by four wheel drive. But - if you really do want that rush - head out on the Shotover Jet, dive off the Nevis Bungy, freefall on the Canyon swing or Zip line the Gondola. Just be sure it's done on an empty stomach & don't say we didn't warn you!

### SUGGESTED ACTIVITY - Remarkable Experience Art, Wine and Heritage Tour

Cruise in style in a 1937 convertible soft-top Chevrolet bus, taking in spectacular mountain and lake vistas.

You will visit historic areas in Queenstown and Arrowtown and sample some of the local cuisine, while also getting the chance to view the personal galleries of some amazing local artists.

Travelling with the unique, convertible top down you can enjoy an open-air view of the magnificent surroundings and alluring beauty of the region. Rich and golden, moody and blue or full of sunshine and glory, bright and crisp with snowy peaks, each day and season offers a fresh new scene.

You have the opportunity to view fine art, carefully crafted and created by renowned artists of New Zealand in their personal galleries. Paintings of various styles and beautifully crafted wood sculptures are among the mediums.

The complete circuit takes you from Queenstown to the picturesque gold-mining town of Arrowtown.

Travelling on to the final stop you will taste wines grown from grapes onsite and indulge in mouth-watering cuisine in the cosy gallery or al fresco. Wander around delightful grounds of terraced gardens and ponds over-looking the beautiful Lake Hayes. The journey winds back to Queenstown over the gold filled Shotover River, through pastures and around the mighty sleeping giant, Lake Wakatipu. The 1937 Chevrolet bus arrived in New Zealand in 1942 and was in service for three decades. This was originally one of six buses operated by Routeburn Valley Motors, transporting passengers from Kinloch, at the head of Lake Wakatipu, to the Routeburn track.

### Your accommodation: Millennium Hotel Queenstown

Right in the heart of the action, the Millennium Hotel is just minutes from Queenstown's central shopping and entertainment district. Outdoor activities such as bungy jumping, white water rafting and jet boating are just some of the easily accessible activities nearby in New Zealand's adventure capital.



## Day 2



### Dart River Wilderness Jet

Journey deep into the heart of the world-renowned Mt Aspiring National Park, where myth, heritage and fantasy come to life. As one of Queenstown's most exhilarating activities, the Wilderness Jet adventures on a spectacular journey deep into the heart of the world-renowned Mount Aspiring National Park.

### Your accommodation: Millennium Hotel Queenstown

Right in the heart of the action, the Millennium Hotel is just minutes from Queenstown's central shopping and entertainment district. Outdoor activities such as bungy jumping, white water rafting and jet boating are just some of the easily accessible activities nearby in New Zealand's adventure capital.

Meals included: Breakfast



---

## Day 3



### Collect your rental car

This tour can be priced with any of the rental cars available in our fantastic range, from economy hatchbacks to prestige saloons and SUV's.

---

### Queenstown to Wanaka

Leaving Queenstown you'll drive over New Zealand's highest sealed road, the Crown Range before arriving into the resort town of Wanaka.

---

### Wanaka Wine Tours Boutique Central Otago Wine Trail

This small group wine tour (maximum 8) offers a relaxed and personal introduction to the wines and scenery of the Central Otago region. This tour is a great way to explore award-winning vineyards hidden amongst the rugged landscape of Central Otago. Visit and enjoy tastings at 4 Central Otago vineyards including a delicious mid-afternoon platter to enjoy with your tastings. You'll also discover the history of the region with a visit to Old Cromwell Town, a charming heritage precinct that has been revitalised into a boutique arts and crafts village.

---

### Your accommodation: Edgewater

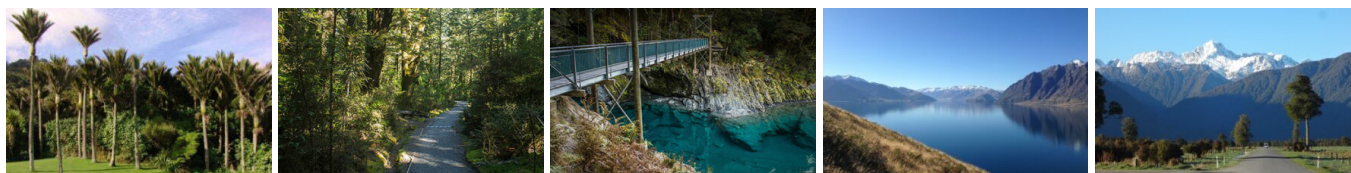
Edgewater is Wanaka's leading hotel located right on the edge of Lake Wanaka. A short stroll to the town centres shops, cafes and restaurants and close to many walking trails the resort is ideal to explore this wonderful Alpine setting.

Meals included: Breakfast



---

## Day 4



### Wanaka to Franz Josef Glacier

The route follows the shores of Lakes Wanaka and Havea before you enter the village of Makarora, the gateway to Mt. Aspiring National Park. The Blue Pools, just outside Makarora, are a wonderful 30-minute walk through pristine native beech forest. Descending into Mt. Aspiring National Park and towards the Haast Pass, crashing rivers and waterfalls are around every corner. Crossing the Haast River you are now truly on the wild West Coast, a 600-kilometre stretch of bush, rainforest, and podocarp forest.

Paringa Salmon Farm is a great halfway stop to stretch your legs, feed the fish, and stop for lunch or refreshment.

First Fox Glacier welcomes you to the glacier region and Franz Josef township is just a further 45 minutes' drive over the impressive Fox Hills.



## SUGGESTED ACTIVITY - Blue Pools Nature Experience with Southern Alps Air

Begin with a 30 minute scenic flight encompassing views of glaciers, Mt Aspiring, remote waterfalls, river valleys and mountain ranges that few people get to experience. With a window seat for every passenger the views are spectacular. From your landing point at Makarora, you are driven a short distance to the beginning of your 2 hour wilderness walk. The walk is on a well formed track through native beech forest which leads you to cross the first of 4 swing bridges and the clear and pure waters of the 'Blue Pools' - pristine, beautiful pools in the Blue River to linger at and enjoy while spotting fish. From here the track winds through native forest amongst the mountains of the Southern Alps near the banks of the Makarora River. Interesting and picturesque this is a very ancient setting only recently made easily accessible. The natural surroundings and tranquility are most noticeable during your relaxing walk in this special part of the Mt Aspiring World Heritage National Park. The track leads you to the meeting point at the mouth of the Young River where the jet boat will be waiting to whisk you off on a 1 hour scenic and spectacular journey through the Makarora Valley on the glacially fed waters of the pristine Makarora River. Feel the wind in your hair during your jet boat safari and be intrigued by the changing landscape as you journey to the mouth of the Makarora River and the head waters of Lake Wanaka before returning to Makarora Village.

### Your accommodation: Scenic Hotel Franz Josef Glacier

Only a breath away from the Franz Josef Glacier, Scenic Hotel is located in the heart of Franz Josef Village. Here you will find all of the amenities you would expect, as well as being close to the shops, restaurants and activities on offer in the beautiful Westland region.

Meals included: Breakfast



## Day 5



### Twin Glacier Scenic Helicopter Flight with The Helicopter Line

Take a spectacular scenic flight over two of New Zealand's most famous glaciers. Land at the head of one and view the incredible sight of this frozen river as it winds its way through ancient carved valleys. Should weather not be suitable to take this flight you are able to transfer your booking onto a similar tour on any of the Helicopter Line's operations in Queenstown or Mt Cook.

### Your accommodation: Scenic Hotel Franz Josef Glacier

Only a breath away from the Franz Josef Glacier, Scenic Hotel is located in the heart of Franz Josef Village. Here you will find all of the amenities you would expect, as well as being close to the shops, restaurants and activities on offer in the beautiful Westland region.

Meals included: Breakfast



## Day 6



### Franz Josef to Punakaiki

Driving north on State Highway 6 you pass through many small West Coast towns. Hari Hari is the township that Guy Menzies decided to land in (or rather crash land) as he became the first person to fly solo across the Tasman. Ross is the site of an old gold mining town and some of the old buildings remain. You can even pan for gold. The craft and gift stores in Hokitika are excellent with a great range of locally made items and if you want to explore further here then the Hokitika Gorge is worthy of a detour.

Just south of Greymouth is Shantytown a replica gold rush town with lots of great displays from yesteryear. Be sure to stop at the supermarket in Greymouth as there is none in Punakaiki. Punakaiki is a highlight of this drive so allow plenty of time to walk the paths and explore the formations.

## Your accommodation: Scenic Hotel Punakaiki

Scenic Hotel Punakaiki is a modern, award-winning hotel complex, architecturally designed to harmonious with the local environment. Nestled in the foothills of Paparoa National Park the resort has spectacular views of the Wild West Coast beaches while all rooms have rainforest and/or ocean views.

Meals included: Breakfast



---

## Day 7



### Punakaiki to Greymouth

You have plenty of time to explore Punakaiki this morning and to enjoy the scenic drive back along the coast to Greymouth to catch the TranzAlpine Scenic Train to Christchurch. Just south of the town of Greymouth is Shantytown a replica gold rush town with lots of great displays from yesteryear and a great place to spend a few hours. Drop your rental car at the Greymouth Train Station depot located inside the train station building before checking in for your train journey.

---

### TranzAlpine Scenic Train: Greymouth to Christchurch

Considered one of the world's great train journeys, the TranzAlpine Scenic Train takes you from Greymouth to Christchurch. You'll travel across the South Island from the west to the east coast through Arthur's Pass National Park. From the comfort of your carriage see lush beech forest, deep river valleys and the spectacular peaks of the Southern Alps. Descend to the windswept Canterbury Plains before arriving in the city of Christchurch.

---

### Private Transfer Christchurch Train Station to your accommodation

On arrival at the Christchurch train station, you will be met by a private driver and transferred to your accommodation.

---

## Your accommodation: Distinction Hotel Christchurch

This luxury hotel is centrally located in the revitalised Cathedral Square in the heart of the city, a short stroll from the Avon River, Botanical Gardens, Christchurch Casino, Cashel Mall and new Christchurch Convention Centre.

Meals included: Breakfast



---

## Day 8



### Collect your rental car

This tour can be priced with any of the rental cars available in our fantastic range, from economy hatchbacks to prestige saloons and SUV's.

---

### Explore Christchurch City

Following the 2011 earthquake that razed its centre and much of the outlying suburbs, Christchurch is well into a billion-dollar makeover. In the middle of the Canterbury Plains, bordering the Pacific Ocean, New Zealand's newest city is an ideal gateway to exploring the middle of the South.

Go punting on the Avon River, take a historic tram ride, catch the gondola to the rim of an extinct volcano or do all three! See the world's only Cardboard Cathedral and for nature enthusiasts - wander the renowned Christchurch Botanic Gardens, or head to Oxford Terrace in the city to find a great spot to eat or drink.

Drive an hour in any direction to ski, mountain bike, wine taste, whale-watch, bungee jump or play golf. Take the winding Port Hills road to the French settlement of Akaroa and tour the vines in Waipara for an authentic New Zealand wine-tasting experience.

## Christchurch Gondola

In the Heathcote Valley, just fifteen minutes from the heart of Christchurch City, ride the Christchurch Gondola for nearly a kilometer to the collapsed rim of an extinct volcano, which exploded six million years ago. Take in the spectacular panoramic views of the central city, Lyttelton Harbour, Banks Peninsula, Canterbury Plains, and the distant peaks of the Southern Alps. Wander the summit complex, enjoy a coffee or lunch in the cafe, and choose one of many nature walks to explore or visit the Christchurch Discovery Ridge, a dramatic reconstruction of the history of the Port Hills and Christchurch.

## Your accommodation: Distinction Hotel Christchurch

This luxury hotel is centrally located in the revitalised Cathedral Square in the heart of the city, a short stroll from the Avon River, Botanical Gardens, Christchurch Casino, Cashel Mall and new Christchurch Convention Centre.

Meals included: Breakfast



## Day 9



## Christchurch to Aoraki Mt Cook National Park

Today you'll drive through the heart of the South Island, crossing the vast Canterbury plains. Catch your breath in Geraldine before continuing through Fairlie. Ascending Burkes pass you'll come to the picturesque lakeside town of Tekapo.

Follow the road and take in the view of Aoraki Mt Cook (New Zealand's tallest mountain) from the shores of Lake Pukaki, known for its glacier fed turquoise blue colour. Continue along the lake to your final destination Mt Cook Village.

Please note: There are no food shops at Mt Cook, and dinner options are limited to one restaurant. If you wish to self-cater, you must stock up before arriving in Mt Cook, or make dinner reservations in advance.

## Glacier Explorers Mt. Cook

Experience 500 year old icebergs up-close on the Mt Cook terminal lake. The Glacier Explorers tour is the only one of its kind in New Zealand and one of only three in the world! Very few glaciers terminate into lakes and even fewer of them are accessible. See towering ice cliffs and floating icebergs from the safety of a specially designed boat. These boats provide a safe way to view unseen and inaccessible areas of New Zealand's largest glacier The Tasman.

## SUGGESTED ACTIVITY - Sir Edmund Hillary Alpine Centre Museum and Theatre Explorer Pass

A tribute to New Zealand's Sir Edmund Hillary, a humanitarian, ambassador, and one of the world's greatest explorers. The centre showcases the Aoraki Mount Cook region, the history of climbing, and early transport used throughout the region. This comprehensive museum details the life of Sir Edmund Hillary, the Hermitage, and provides access to the 126-seat custom-designed theatre. Check out the daily film schedule which includes 3D Movies, documentaries, and 360-degree digital dome features.

## Your accommodation: Hermitage Hotel, Wakefield Wing Superior Room

The Hermitage Hotel ringed by magnificent snow-capped peaks of the Southern Alps, is a world-renowned tourist destination and has been an icon of superior accommodation and dining since 1884. Room type - Wakefield Wing Superior room facing Aoraki/Mt. Cook.

Meals included: Breakfast



## Day 10





## Aoraki Mt Cook National Park to Dunedin

Today you'll leave Aoraki Mt Cook National Park and travel past Twizel, one of the locations for the Lord of the Rings films. Go through Omarama, the gliding capital of New Zealand, be sure to stop at The Wrinkly Ram, a quirky local cafe and souvenir store. Driving through the Waitaki Valley follow the hydro power generating system towards the east coast. Stretch your legs in Oamaru, known for its white stone buildings constructed with the local Oamaru Stone. If you were a little late off the mark this morning you may get the chance to see the blue penguins come ashore at dusk.

Continue south down the coast to Moeraki, and take a detour towards the beach to see the Moeraki Boulders, a unique geological feature well worth a look. As you arrive in Dunedin, take in the city's Edwardian and Scottish heritage reflected in the buildings around the city centre The Octagon.

---

### SUGGESTED ACTIVITY - Speights Brewery Tour

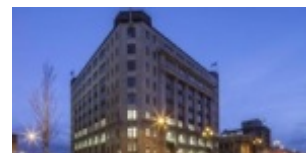
Founded in 1876, the Speights Brewery still occupies its original Dunedin site - with several of its buildings dating back to the late 1800's. One of the only remaining 'gravity breweries' in the world, this 60-minute tour explains its inner workings. There is an opportunity to taste six different beers as well as bottle, cap and brew your own personal Speights Gold Medal Ale - the brewery's flagship beer.

---

### Your accommodation: Distinction Dunedin Hotel

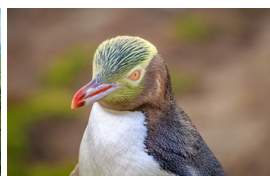
Distinction Dunedin Hotel occupies the grand Chief Post Office built in the 1930's. This art deco inspired building has recently been transformed into a 4 star hotel with elegant décor, set in the heart of the city.

Meals included: Breakfast



---

## Day 11



### Castle to Cruise Tour and Penguin Place

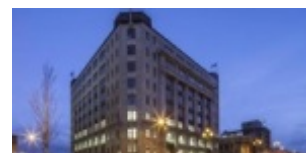
Today you'll explore the wildlife and history of the Otago Peninsula. You'll be welcomed to the MV Monarch for a wildlife cruise around Taiaroa Head, home to the world's only mainland nesting site for royal albatross. Scattered along the rocks you'll also see New Zealand fur seals basking in the sun and possibly New Zealand sea lions on the beach. In the water you may also see penguins, dolphins and other marine birds. Back on land you'll take a guided tour of New Zealand's only castle, Larnach Castle built in 1871. Learn of the scandals and history of the castle and explore the beautiful garden of international significance. Your final stop of the day is to The Otago Peninsula Eco Restoration Alliance (formally Penguin Place), a natural nesting site for the rarest penguin in the world, the Yellow Eyed Penguin.

---

### Your accommodation: Distinction Dunedin Hotel

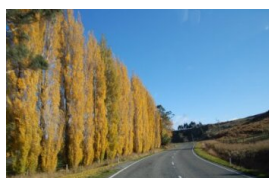
Distinction Dunedin Hotel occupies the grand Chief Post Office built in the 1930's. This art deco inspired building has recently been transformed into a 4 star hotel with elegant décor, set in the heart of the city.

Meals included: Breakfast



---

## Day 12



### Dunedin to Te Anau

The drive to Te Anau takes you through classic Southland farming scenery. Head off-the-beaten-track today and follow the coastline instead of the inland route. Go through The Catlins area and be sure to take a detour to Kaka Point to view its majestic cliffs and pounding surf. Continue through Invercargill to Riverton and Colac Bay, and then head north to Manapouri. From here you can embark on a day or overnight cruise to the remote Doubtful Sound, renowned for its natural beauty. Just a short way further will bring you to your lakeside destination of Te Anau, gateway to Fiordland National Park and Milford Sound.

## SUGGESTED ACTIVITY - Te Anau Glowworm Caves with RealNZ

Begin your Te Anau Glowworm experience with a scenic cruise across Lake Te Anau on board the luxury catamaran, Luminosa, to the western side of the lake. On arrival, you'll enter the caves through Cavern House, where informative displays detail the history of this 12,000 year old underground network.

You'll then explore by limestone pathway while your guide points out hidden whirlpools, sculpted rock formations and a rushing underground waterfall. See a magical display of thousands of glowworms as you glide through the darkness in a small boat.

### Your accommodation: Distinction Luxmore Hotel

The perfect base for all your Fiordland travel, Distinction Luxmore Hotel provides comfortable accommodation right in the heart of Te Anau.

Meals included: Breakfast



## Day 13



### Te Anau to Milford Sound and return to Te Anau

The road to Milford Sound offers some of the most beautiful and iconic scenery in the country. From crystal clear lakes and towering mountains to lush glacier formed meadows, this area is dramatic and unyielding. Stretch your legs on the Chasm Walk, a short stroll through native beech forest to see several powerful waterfalls. Continue on through the Homer Tunnel, an engineering marvel at 1219 metres long. Arriving into the village of Milford, you will be greeted with an amazing view of Mitre Peak. A day cruise into the heart of the sound is not to be missed. You'll learn about how this magnificent area was formed and experience the wonder of the falls that line the Fiord before back-tracking the way you came.

Please note: Make sure to allow 2.5hrs to Milford Sound, this takes into account the current road works on the Milford Road.

### Milford Sound Cruise with RealNZ

Get up close and personal with Milford Sound on a leisurely cruise of this spectacular fiord. From thundering waterfalls to sky-high mountains to lush rainforests, Milford has it all. Experience the spray of a waterfall as you cruise close to sheer rock faces. Informative, participative and relaxed, this is the perfect way to experience Milford Sound to the fullest.

### Your accommodation: Distinction Luxmore Hotel

The perfect base for all your Fiordland travel, Distinction Luxmore Hotel provides comfortable accommodation right in the heart of Te Anau.

Meals included: Breakfast, Lunch



## Day 14



### Te Anau to Queenstown

Today you'll cross vast tussock lands on your way to Queenstown. Pass through Mossburn, the deer capital of the nation. Continue on through the Southland countryside where the road begins to hug the lake edge and the Remarkables mountain range towers over your approach into the adventure capital of New Zealand.



## TSS Earnslaw cruise to Walter Peak including gourmet BBQ dinner and a farm tour

Enjoy a quintessential Kiwi experience, a delicious gourmet BBQ buffet meal and a farm demonstration in a stunning lakeside setting. Take in the stunning views of Lake Wakatipu and its surroundings as you cruise across the lake to the historic Walter Peak high country farm aboard the TSS Earnslaw Steamship.

Enjoy the ambience of the heart of the stately homestead while your Colonel's Homestead Restaurant chef prepares a gourmet BBQ dinner. Your seasonal menu includes an extensive selection of local New Zealand produce, including succulent meats and a selection of delicious vegetables and salads. Complete your meal with your choice of delicious desserts, New Zealand cheeses, tea and coffee.

After dinner, watch the farm dogs in action with a sheep-herding demonstration and say hello to the other farm animals. Finally, cruise home under the southern stars and enjoy the fresh night air as the lights of Queenstown draw ever closer.

---

### Your accommodation: Millennium Hotel Queenstown

Right in the heart of the action, the Millennium Hotel is just minutes from Queenstown's central shopping and entertainment district. Outdoor activities such as bungy jumping, white water rafting and jet boating are just some of the easily accessible activities nearby in New Zealand's adventure capital.

Meals included: Breakfast, Speciality Dinner



---

## Day 15



### Your final morning in Queenstown before driving to the airport and catching your next flight

Depending on when your flight departs you might have time for one last Queenstown adventure before dropping your car off at the airport and catching your flight.

## Tour details

Departures:	Daily
Tour type:	South Island Self Drive
Starts:	Queenstown
Finishes:	Queenstown
Tour length:	15
Accommodation:	Hotel 4 star
Car/transport type:	

---

## Included activities

Includes	All breakfasts
Includes	Private train station transfers
Includes	Private airport transfers
Includes	TranzAlpine Train from Greymouth to Christchurch
Includes	Christchurch Gondola Ride
Includes	Glacier Explorers Tour, Mt Cook National Park
Includes	Otago Peninsula Wildlife Premier tour including Larnach Castle
Includes	Dart River Wilderness Safari, Glenorchy
Includes	TSS Earnslaw cruise and dinner at Walter Peak high country farm, Queenstown
Includes	Boutique Half Day Wanaka Wine Tour
Includes	Real Journeys Milford Sound Cruise
Includes	Entry to Glacier Hot Pools
Includes	Twin Glaciers Scenic Helicopter Flight, Franz Josef

---

## Accommodation summary

Day 1	Millennium Hotel Queenstown
Day 2	Millennium Hotel Queenstown
Day 3	Edgewater
Day 4	Scenic Hotel Franz Josef Glacier
Day 5	Scenic Hotel Franz Josef Glacier
Day 6	Scenic Hotel Punakaiki
Day 7	Distinction Hotel Christchurch
Day 8	Distinction Hotel Christchurch
Day 9	Hermitage Hotel, Wakefield Wing Superior Room
Day 10	Distinction Dunedin Hotel
Day 11	Distinction Dunedin Hotel
Day 12	Distinction Luxmore Hotel
Day 13	Distinction Luxmore Hotel
Day 14	Millennium Hotel Queenstown