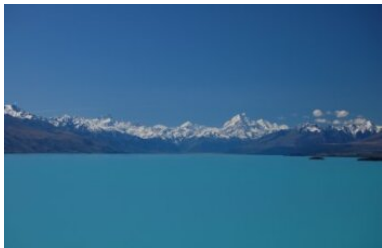




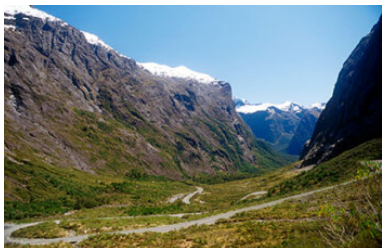
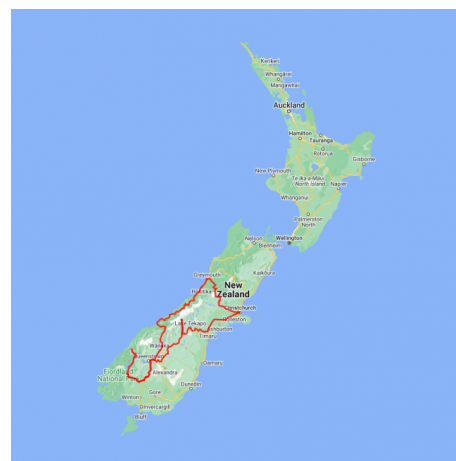
Fiords, Glaciers and Mountains self drive tour - reversed

This 10 day tour takes you to the icons of the South Island, with extra nights in Christchurch, Fiordland and Queenstown you'll have time to discover the charms of each destination. You begin with a scenic train journey across the Southern Alps to the ruggedly beautiful West Coast with its spectacular glaciers. Other highlights of this fantastic adventure include a nature cruise in the pristine Milford Sound in Fiordland National Park, the adventure capital of Queenstown and the magnificent mountains of Mt Cook National Park.



Starts in: Christchurch
Finishes in: Christchurch
Length: 10days / 9nights
Accommodation: Hotel 4 star
Can be customised: Yes

This itinerary can be customised to suit you perfectly. We can add more days, remove days, change accommodations, mix it up, add activities to suit your interests or simply design and create something from scratch. Call us today to get your custom New Zealand itinerary underway.



Inclusions:

Includes: Late model rental cars

Includes: Unlimited kms

Includes: Airport & ferry terminal rental car fees

Includes: Comprehensive tour pack (detailed itinerary, driving instructions, map/guidebooks, brochures)

Included activity: Private transfer Christchurch International Airport to your accommodation

Included activity: Private transfer accommodation to Christchurch Train Station with Christchurch Touring

Included activity: Milford Sound Cruise and picnic lunch with RealNZ

Includes: Fully inclusive rental car insurance (excess may apply)

Includes: GPS navigation

Includes: Additional drivers

Includes: 24/7 support while touring New Zealand

Included activity: Electronic Travel Guide and In-Country Support App

Included activity: TranzAlpine Scenic Train: Christchurch to Greymouth

: 9 breakfasts, 1 lunch



Day 1



Private transfer Christchurch International Airport to your accommodation

On arrival, you will be met by a private driver and transferred to your Christchurch accommodation.

Welcome to Christchurch City

Christchurch New Zealand's garden city is steadily being transformed into a vibrant urban destination. Encompassing a large green belt, it is known for its wide tree lined avenues and lush gardens. A great way to explore the city or easy way to see the sights or ride the historic trams across town to the renowned botanic gardens and the unique cardboard Transitional Cathedral, that's right it is built of cardboard!

SUGGESTED ACTIVITY - Discover Christchurch Afternoon Tour

A half day sightseeing tour of Christchurch highlighting both the damage to the city inflicted by several large earthquakes in 2010 and 2011 and the rebuild which is currently in progress, together with the surviving beauty of the city and the historical landmarks. Experience the grand architecture, beautiful gardens and scenic viewpoints on a half-day city tour of Christchurch.

The tour commences in the central city of Christchurch and covers the area which was completely devastated by the Christchurch earthquakes in February 2011. The guide will explain both the history of the city and the effects of the earthquake. On leaving the inner city, the tour travels to Mona Vale a historic homestead and gardens. Then you will travel to the Sign of the Takahe, a historic building with a lookout providing spectacular views over the city, Canterbury Plains and to the Southern Alps. The tour then travels via the Port Hills and Lyttleton Harbour by way of the Sign of the Kiwi and Governors Bay to the Port of Lyttleton. The tour proceeds through the Lyttleton harbour tunnel to the seaside suburb of Sumner and cave rock before returning to the central city where the tour will conclude.

Your accommodation: Distinction Hotel Christchurch

This luxury hotel is centrally located in the revitalised Cathedral Square in the heart of the city, a short stroll from the Avon River, Botanical Gardens, Christchurch Casino, Cashel Mall and new Christchurch Convention Centre.



Day 2



Private transfer accommodation to Christchurch Train Station with Christchurch Touring

A private driver will collect you from your accommodation and transfer you to the Christchurch train station in time for your train journey.

TranzAlpine Scenic Train Christchurch to Greymouth

Your early morning departure is rewarded with incredible scenery today onboard the TranzAlpine Scenic Train, considered one of the world's great train journeys. It travels between Christchurch and Greymouth, from one coast of New Zealand to the other. From your carriage you'll see the fields of the Canterbury Plains and farmland, followed by the spectacular gorges and river valleys of the Waimakariri River. Your train then climbs into the Southern Alps before descending through the lush beech rain forest to the West Coast town of Greymouth, a great base for visits to Punakaiki and the West Coast glaciers.

Collect your rental car

This tour can be priced with any of the rental cars available in our fantastic range, from economy hatchbacks to prestige saloons and SUV's.

Greymouth to Franz Josef

Leaving Greymouth you will head south into Glacier Country. Pass through Hokitika and be sure to take a detour to the spectacular Hokitika Gorge, the famous turquoise-coloured river surrounded by native bush-clad cliffs. Continue on through Ross, a historic gold mining town where several buildings still remain intact and still to this day one of New Zealand's working gold mines. As you travel further down the coast you'll also go through Hari Hari, the town where Guy Menzies, the first person to fly solo over the Tasman crash landed. Heading south along the mighty West Coast highway you pass through ancient temperate rainforests while getting sneak peeks of the wild west coast beach occasionally. Whataroa is the next town where you can see one of the world's rarest birds, the New Zealand white heron or Kotuku nest at the Waitangi Roto Nature Reserve, and guided tours from October to March will take you there. Arriving in Franz Josef township is a lively place with a great atmosphere, restaurants including Blue Ice and Snakebite are worth a meal. This small town is packed with walks, adventure, and scenic activities, something for everyone.

SUGGESTED ACTIVITY - Twin Glacier Scenic Helicopter Flight with The Helicopter Line

Take a spectacular scenic flight over two of New Zealand's most famous glaciers. Land at the head of one and view the incredible sight of this frozen river as it winds its way through ancient carved valleys. Should weather not be suitable to take this flight you are able to transfer your booking onto a similar tour on any of the Helicopter Line's operations in Queenstown or Mt Cook.

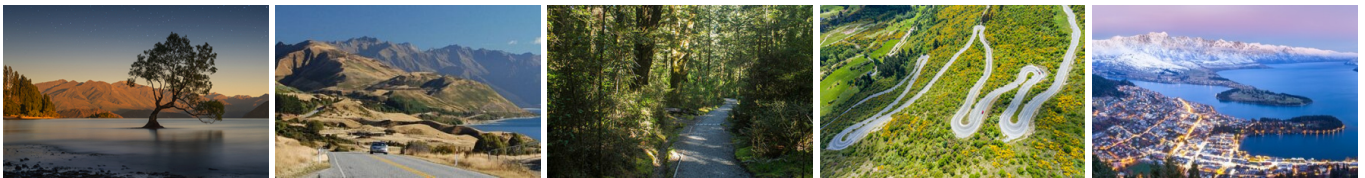
Your accommodation: Scenic Hotel Franz Josef Glacier

Only a breath away from the Franz Josef Glacier, Scenic Hotel is located in the heart of Franz Josef Village. Here you will find all of the amenities you would expect, as well as being close to the shops, restaurants and activities on offer in the beautiful Westland region.

Meals included: Breakfast



Day 3



Franz Josef to Queenstown (via Wanaka)

Heading south you pass through the second glacier town of Fox Glacier before heading along the coast and more classic West Coast bush scenery. Be sure you stop at the Paringa Salmon Farm for lunch or a refreshment make sure you feed the fish, it's very impressive. At Knights Point Lookout elephant seals can often be seen basking on the sandy beaches at the far end of the point.

Crossing the massive Haast River you turn inland and head into the valley climbing through mountains littered with waterfalls.

The Haast Valley offers a spectacular view of the river and its enormous power. The Blue Pools near Makarora are a great 30-minute walk.

Lakes Wanaka and Hawea guide you into the township of Wanaka before you head over New Zealand's highest sealed road, Crown Range Road before dropping into Queenstown. This drive should be planned as a whole day to really enjoy the scenery and to allow time to explore the walks, and many stops en route.

Your accommodation: Millennium Hotel Queenstown

Right in the heart of the action, the Millennium Hotel is just minutes from Queenstown's central shopping and entertainment district. Outdoor activities such as bungy jumping, white water rafting and jet boating are just some of the easily accessible activities nearby in New Zealand's adventure capital.

Meals included: Breakfast



Day 4



Explore Queenstown

Well-known as New Zealand's 'adventure capital', Queenstown is home to a range of adventures, from the world's first and most famous bungy jumps to jet boat thrills, white-water rafting, and skydiving. However, Queenstown offers far more than a fast-paced, action-packed holiday. Settled on the shores of beautiful Lake Wakatipu beneath a soaring panorama of the Remarkables Mountain Range, this alpine town is surrounded by a plethora of historic, gastronomic, and scenic wonders. Take a stroll through the beautiful lakefront parks and gardens, browse through market stalls on weekends, dine in wonderful al-fresco restaurants, or ride on the 100-year-old historic Steamship - TSS Earnslaw to Walter Peak Station. Take the Queenstown Gondola up to Bob's Peak and soak up the panoramic views of the magnificent lake and mountain ranges. And after all of that, if you do want the adrenaline rush, Queenstown is known for taking your pick from the Shotover Jet, Canyon Swing, Zipline, Luge, or Heli-ski.

SUGGESTED ACTIVITY - Safari of the Scenes Queenstown Tour

For those keen on the Hobbit and Lord of The Rings films, join Nomad Safaris for an unexpectedly delightful journey. In safari-equipped 4WD vehicles, you will be taken on a true off-road adventure. Experienced guides will take you on a breathtaking excursion through diverse scenery around the Whakatipu Basin. See historic Arrowtown and go over the Arrow River, as well as experiencing the truly remarkable views of the lake and mountain surround from the Skippers Canyon Saddle. Although no sets remain intact, the landscapes are instantly recognisable. Some of the sites you will visit during this tour include the Misty Mountains, Pillars of Kings and the Ford of Bruinen.

Your accommodation: Millennium Hotel Queenstown

Right in the heart of the action, the Millennium Hotel is just minutes from Queenstown's central shopping and entertainment district. Outdoor activities such as bungy jumping, white water rafting and jet boating are just some of the easily accessible activities nearby in New Zealand's adventure capital.

Meals included: Breakfast



Day 5



Queenstown to Te Anau

Following the shores of Lake Wakatipu, The Remarkables mountain range towers over you as you approach the township of Kingston. You'll venture into Southland before crossing the rolling tussock lands of Mossburn (deer capital of New Zealand) and shortly arriving at Te Anau, the gateway to Fiordland National Park.

SUGGESTED ACTIVITY - Te Anau Glowworm Caves with RealNZ

Begin your Te Anau Glowworm experience with a scenic cruise across Lake Te Anau on board the luxury catamaran, Luminosa, to the western side of the lake. On arrival, you'll enter the caves through Cavern House, where informative displays detail the history of this 12,000 year old underground network.

You'll then explore by limestone pathway while your guide points out hidden whirlpools, sculpted rock formations and a rushing underground waterfall. See a magical display of thousands of glowworms as you glide through the darkness in a small boat.

Your accommodation: Distinction Luxmore Hotel

The perfect base for all your Fiordland travel, Distinction Luxmore Hotel provides comfortable accommodation right in the heart of Te Anau.

Meals included: Breakfast



Day 6



Te Anau to Milford Sound and return to Te Anau

The road to Milford Sound offers some of the most beautiful and iconic scenery in the country. From crystal clear lakes and towering mountains to lush glacier formed meadows, this area is dramatic and unyielding. Stretch your legs on the Chasm Walk, a short stroll through native beech forest to see several powerful waterfalls. Continue on through the Homer Tunnel, an engineering marvel at 1219 metres long. Arriving into the village of Milford, you will be greeted with an amazing view of Mitre Peak. A day cruise into the heart of the sound is not to be missed. You'll learn about how this magnificent area was formed and experience the wonder of the falls that line the Fiord before back-tracking the way you came.

Please note: Make sure to allow 2.5hrs to Milford Sound, this takes into account the current road works on the Milford Road.

Milford Sound Cruise with RealNZ

Get up close and personal with Milford Sound on a leisurely cruise of this spectacular fiord. From thundering waterfalls to sky-high mountains to lush rainforests, Milford has it all. Experience the spray of a waterfall as you cruise close to sheer rock faces. Informative, participative and relaxed, this is the perfect way to experience Milford Sound to the fullest.

SUGGESTED ACTIVITY - Milford Premium Cruise with RealNZ

Get up close and personal with Milford Sound on a leisurely cruise of this spectacular fiord aboard the M.V Sinbad, an exclusive vessel for a premium experience. From thundering waterfalls to sky-high mountains to lush rainforests, Milford has it all. Experience the spray of a waterfall as you cruise close to sheer rock faces. With a glass of bubbles on arrival and canapes provided throughout the journey, this is the perfect way to explore Milford Sound. At a capped capacity of 40 people and a roaming nature guide providing informative commentary throughout the extended cruise, this experience allows guests to enjoy the Fiord at a relaxing pace.

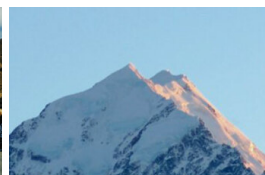
Your accommodation: Distinction Luxmore Hotel

The perfect base for all your Fiordland travel, Distinction Luxmore Hotel provides comfortable accommodation right in the heart of Te Anau.

Meals included: Breakfast, Lunch



Day 7



Te Anau to Aoraki Mt Cook National Park

Crossing the rolling tussock lands you pass through Mossburn, the deer capital of New Zealand. Following Lake Wakatipu north the Remarkable mountain range towers over you as you approach the adventure capital of Queenstown, before heading east over the historic Kawarau Bridge and if you haven't already done so you can take a bungy jump from the bridge, or sit back and watch others throw themselves off. For a more sedate activity, Gibbston which borders the Kawarau River has many vineyards which are open for tastings.

The Kawarau Gorge guides you towards Cromwell and for more wine tastings a side trip to Bannockburn is a must, with many award winning vineyards and winery restaurants to enjoy. Cromwell sits at the head of the Kawarau Gorge and the historic old town is well worth the visit, the buildings are now home to quaint shops and cafes. The old town buildings were relocated from the valley that now sits deep under Lake Dunstan. Continue along Lake Dunstan until you reach the historic and scenic Bendigo Reserve, which was one of Otago's original gold mining settlements. Well marked paths will guide you to the remains of stone cottages and other buildings from this bygone era.

The Lindis Pass is one of New Zealand's highest roads with the summit reaching 971 metres. The tussock covered hills offer an unusual contrast as you pass from Central Otago into the Mackenzie Basin. The towns of Omarama and Twizel are the last stops before you arrive at Lake Pukaki and take the Mt Cook Highway along the shores to the village. In Aoraki Mt Cook Village a myriad of activities are available scenic ski plane or helicopter flights with glacier landings to kayaking on a glacial lake and a host of walks to suit all abilities. At The Hermitage Hotel the Sir Edmund Hillary Alpine Centre is a must see.

Please note: There are no food shops at Mt Cook, and dinner options are limited to one restaurant. If you wish to self-cater, you must stock up before arriving in Mt Cook, or make dinner reservations in advance.

SUGGESTED ACTIVITY - Sir Edmund Hillary Alpine Centre Museum and Theatre Explorer Pass

A tribute to New Zealand's Sir Edmund Hillary, a humanitarian, ambassador, and one of the world's greatest explorers. The centre showcases the Aoraki Mount Cook region, the history of climbing, and early transport used throughout the region. This comprehensive museum details the life of Sir Edmund Hillary, the Hermitage, and provides access to the 126-seat custom-designed theatre. Check out the daily film schedule which includes 3D Movies, documentaries, and 360-degree digital dome features.

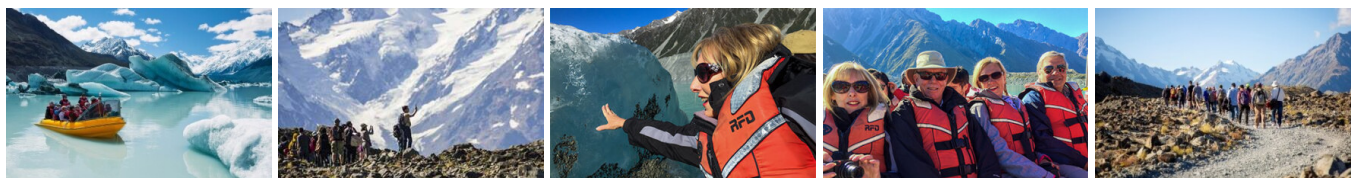
Your accommodation: Hermitage Hotel, Wakefield Wing Superior Room

The Hermitage Hotel ringed by magnificent snow-capped peaks of the Southern Alps, is a world-renowned tourist destination and has been an icon of superior accommodation and dining since 1884. Room type - Wakefield Wing Superior room facing Aoraki/Mt. Cook.

Meals included: Breakfast



Day 8



SUGGESTED ACTIVITY - Glacier Explorers Mt. Cook

Experience 500 year old icebergs up-close on the Mt Cook terminal lake. The Glacier Explorers tour is the only one of its kind in New Zealand and one of only three in the world! Very few glaciers terminate into lakes and even fewer of them are accessible. See towering ice cliffs and floating icebergs from the safety of a specially designed boat. These boats provide a safe way to view unseen and inaccessible areas of New Zealand's largest glacier The Tasman.

Aoraki Mt Cook National Park to Christchurch

Leaving Aoraki Mt Cook National Park, travel a short distance before stopping at the visitor centre on the southern shores of Lake Pukaki. Learn about the formation of the region and take in the spectacular views of Mount Cook. Lake Tekapo also displays the same reflective qualities of Lake Pukaki, making the waters a bright turquoise. You'll go through the small town of Tekapo, home to some of the most photographed subjects in the country, the Church of the Good Shepherd and the Collie Dog statue. It's a great place to take a scenic flight, enjoy a guided horse trek, a boat trip on the pristine lake or just marvel at the magnificent views. From here you travel through Burkes Pass and into the rich farming valley that surrounds Geraldine. Continue on across the vast Canterbury Plains to arrive in Christchurch City, your destination for the night.

Your accommodation: Distinction Hotel Christchurch

This luxury hotel is centrally located in the revitalised Cathedral Square in the heart of the city, a short stroll from the Avon River, Botanical Gardens, Christchurch Casino, Cashel Mall and new Christchurch Convention Centre.

Meals included: Breakfast



Day 9



Explore Christchurch City

Following the 2011 earthquake that razed its centre and much of the outlying suburbs, Christchurch is well into a billion-dollar makeover. In the middle of the Canterbury Plains, bordering the Pacific Ocean, New Zealand's newest city is an ideal gateway to exploring the middle of the South.

Go punting on the Avon River, take a historic tram ride, catch the gondola to the rim of an extinct volcano or do all three! See the world's only Cardboard Cathedral and for nature enthusiasts - wander the renowned Christchurch Botanic Gardens, or head to Oxford Terrace in the city to find a great spot to eat or drink.

Drive an hour in any direction to ski, mountain bike, wine taste, whale-watch, bungee jump or play golf. Take the winding Port Hills road to the French settlement of Akaroa and tour the vines in Waipara for an authentic New Zealand wine-tasting experience.

SUGGESTED ACTIVITY - Hot Air Balloon Ride

Escape to a world of peace and tranquillity. Hot Air Ballooning is a magical experience and a flight with Ballooning Canterbury offers panoramic views across the fertile Canterbury Plains to the Southern Alps. There is nothing quite so romantic and exciting as floating effortlessly over an ever changing landscape.

Before leaving the ground, the pilot will give you a briefing. During your flight you will experience spectacular views and have fantastic photo opportunities. Chilled champagne, orange juice and a light snack then be served. Hot air ballooning is a hands-on experience and you will be encouraged to assist with the setup and pack away of the balloon itself.

SUGGESTED ACTIVITY - Willowbank Wildlife Reserve

Nowhere else in New Zealand will you find such a wide range of New Zealand wildlife so close to you. Willowbank provides you with a "Kiwi Guarantee" and is home to New Zealand's largest and most accessible kiwi viewing area. With this unique experience, you will see New Zealand's natural splendour first hand, and view Kiwis that are not hidden behind glass. You will explore one of the most complete selections of New Zealand native and introduced wildlife in natural bush surroundings. Much of the Willowbank wildlife wander free and is able to be petted and fed.

Choose to explore the reserve yourself, or for an up-close Kiwi experience, you can take a guided tour.

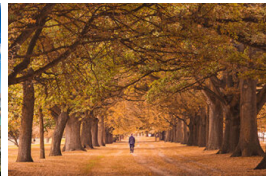
Your accommodation: Distinction Hotel Christchurch

This luxury hotel is centrally located in the revitalised Cathedral Square in the heart of the city, a short stroll from the Avon River, Botanical Gardens, Christchurch Casino, Cashel Mall and new Christchurch Convention Centre.

Meals included: Breakfast



Day 10



Return your vehicle to Christchurch Airport

Explore more of Christchurch before dropping your rental car at the airport depot and continuing your onward journey.

Tour details

Departures:	Daily
Tour type:	South Island Self Drive
Starts:	Christchurch
Finishes:	Christchurch
Tour length:	10
Accommodation:	Hotel 4 star
Car/transport type:	

Included activities

Includes	All breakfasts
Includes	Private train station transfers
Includes	Private airport transfers
Includes	TranzAlpine Train from Christchurch to Greymouth
Includes	Real Journeys Milford Sound Cruise

Accommodation summary

Day 1	Distinction Hotel Christchurch
Day 2	Scenic Hotel Franz Josef Glacier
Day 3	Millennium Hotel Queenstown
Day 4	Millennium Hotel Queenstown
Day 5	Distinction Luxmore Hotel
Day 6	Distinction Luxmore Hotel
Day 7	Hermitage Hotel, Wakefield Wing Superior Room
Day 8	Distinction Hotel Christchurch
Day 9	Distinction Hotel Christchurch