



North to South and All That's Inbetween

Experience the iconic attractions and hidden gems in this 30 day tour exploring the North and South Island in great detail. Explore the Bay of Islands, Rotorua, Kaikoura, Dunedin, Te Anau and Milford, Queenstown and the West Coast Glaciers as well as the major cities. You'll also spend time in more out of the way locations such as the Coromandel, the Hawke's Bay, Wairarapa and Abel Tasman National Park. Experience the diverse geography between the north and south, spectacular landscapes and the rich wildlife that inhabits our land and seas. This tour has something for everyone.

Starts in: Auckland
Finishes in: Christchurch
Length: 30days / 29nights
Accommodation: Motels
Can be customised: Yes

This itinerary can be customised to suit you perfectly. We can add more days, remove days, change accommodations, mix it up, add activities to suit your interests or simply design and create something from scratch. Call us today to get your custom New Zealand itinerary underway.



Inclusions:

Includes: Late model rental cars

Includes: Unlimited kms

Includes: Airport & ferry terminal rental car fees

Includes: Comprehensive tour pack (detailed itinerary, driving instructions, map/guidebooks, brochures)

Included activity: Private Transfer Auckland Airport to Auckland accommodation with Tourcorp

Included activity: Interislander Ferry Wellington to Picton

Included activity: Milford Sound Cruise and picnic lunch with RealNZ

Included activity: TranzAlpine Scenic Train: Greymouth to Christchurch

Included activity: Private transfer accommodation to Christchurch Airport
: 1 lunch

Includes: Fully inclusive rental car insurance (excess may apply)

Includes: GPS navigation

Includes: Additional drivers

Includes: 24/7 support while touring New Zealand

Included activity: Electronic Travel Guide and In-Country Support App

Included activity: Ocean's Cabin with Whale Watch Kaikoura

Included activity: Off-Road Quad Bike Adventure Tour with Franz Josef Wilderness Tours

Included activity: Shared Transfer from the Railway Station to a City Hotel with Christchurch Touring Company

Included activity: Hobbiton Movie Set Tour

Day 1



Private Transfer Auckland Airport to Auckland Accommodation

You will be met at the Auckland airport by the driver and transferred to your Auckland accommodation.

Welcome to Auckland

Auckland, New Zealand's self-proclaimed "City of Sails" is the country's largest metro area. Resting between the Pacific Ocean and the Tasman Sea, this urban paradise has something for everyone. Surrounded by native bush, rainforests, and an abundance of beaches, Auckland is a playground for both the city savvy and those with an eye for adventure. Explore the central museums and galleries on foot, or get out onto the water to experience the best views of the city.

Your accommodation: Sudima Auckland City

Conveniently located within easy walking distance of Auckland's bustling shopping, arts, dining and entertainment precincts and opposite the New Zealand International Convention Centre.



Day 2



Collect your rental car

This tour can be priced with any of the rental cars available in our fantastic range, from economy hatchbacks to prestige saloons and SUV's.

Explore Auckland City

Perched on the edge of a large natural harbour, New Zealand's "City of Sails" offers the best of both worlds. Sandy beaches, native bush and lush rainforests give way to a vibrant urban culture, humming with life. Spend time in the Viaduct Harbour, try your hand at sailing an America's Cup yacht or take the ferry to nearby Waiheke Island for a gourmet food and wine experience.

Walk (if you're that way inclined) to the top of Auckland's highest volcano, Mt Eden, and take in soaring views of the gulf. Pack a picnic lunch and lose yourself in one of the 800 regional national parks on offer or grab a book and relax on a deserted beach. Head up the Sky Tower, standing at just over 300m tall (about 1,000 feet) and have a meal in the 360 degree revolving restaurant. Scale the outermost perimeter of the Harbour Bridge or test your stomach and bungee off both. To end your day, catch a cab to Ponsonby Road and sample some upmarket culinary delights.

SUGGESTED ACTIVITY - Harbour Sailing Cruise with Explore

Enjoy the City of Sails from the water on a relaxed harbour sailing yacht. This cruise offers a uniquely local experience experiencing the harbour under sail with a small vessel with an intimate and engaging atmosphere. View the stunning city sights while sailing on the inner Waitemata Harbour. Sail where the wind takes us while enjoying Auckland's city highlights; including sailing under the Harbour Bridge and other well-known landmarks along the harbour's edge. The crew's local knowledge will give you the best harbour sailing experience Auckland has to offer.

Become the crew and help participate with the sailing experience take the helm while you carve through the water, or if you prefer just sit back and relax above deck.

Your accommodation: Sudima Auckland City

Conveniently located within easy walking distance of Auckland's bustling shopping, arts, dining and entertainment precincts and opposite the New Zealand International Convention Centre.



Day 3



Auckland to Paihia, Bay of Islands

The trip from Auckland to the Bay Of Islands takes around 3.5 hours but give yourself some leeway for stops and sightseeing. As you go through Puhoi, take in the bohemian atmosphere of this historical township. Stop for a breath of fresh salty air in Whangarei and take another break at Kawakawa, home to the world famous Hundertwasser toilets. Enjoy the native bush surrounds and marvel at the endless golden beaches as you arrive into central Bay Of The Islands, Paihia.

Your accommodation: Sea Spray Suites

Sea Spray Suites offers comfortable and relaxing accommodation close to Paihia's best activities and attractions. Directly across the road is the beautiful Te Ti Beach, exploring Paihia's beautiful waters and wildlife is only a short step away. If you are interested in experiencing New Zealand's heritage, The Waitangi Treaty House is only 1km away.



Day 4



Explore the Bay of Islands

Commonly known as the 'winterless north'; New Zealand's Bay of Islands is made up of over 140 subtropical atolls. Renowned for its untouched beaches, abundant marine life and idyllic climate, this tropical paradise ticks all the boxes. Spend some time on a remote stretch of beach, or see the dolphins on an ocean safari. If diving is your thing, take the morning to descend the Rainbow Warrior - The Greenpeace flagship sunk by French saboteurs in 1985. Wander around Russell, a whaling port founded in 1843. Learn about our culture in historic Waitangi, the site where The Treaty of Waitangi was signed in 1840 between the Maori and European settlers dictating the terms by which New Zealand would become a British colony. Alternatively you may like to take a day tour to Cape Reinga, the very top of the North Island.

SUGGESTED ACTIVITY - Hole in the Rock Cruise with Fullers GreatSights

Board your cruise and take in the stunning views as you glide out through the islands and along the Rakaumangamanga Peninsula to Cape Brett, where a historic lighthouse keeps watch over and Piercy Island/Motukōkako, or as it is popularly known as the Hole in the Rock. According to Māori legend, local warriors used to paddle through the Hole in the Rock in their canoes before departing for battle. Drops of water from the cave roof above were a good omen. If conditions permit, your skipper will expertly guide the ship through the narrow space. Keep an eye out for common and bottlenose dolphins, whales, and other marine life during your cruise, and have your camera ready as you get up close to the action. Stop off at Otehei Bay on Urupukapuka Island where you have time to relax, take a walk, have a swim, or enjoy a bite to eat and drink from the on-site fully licensed cafe. The purpose-built catamaran is licensed by DOC (the Department of Conservation) for dolphin viewing and the crew has years of experience locating dolphins in these waters.

SUGGESTED ACTIVITY - Waitangi Treaty Grounds Guided Tour and Cultural Performance

Waitangi is one of New Zealand's most historic sites where the Treaty of Waitangi was signed in 1840 between the local Maori and the British Government. This two day pass allows you access to the Treaty of Waitangi Grounds and includes admission to the Te Kōngahu Museum and Te Rau Aroha Museum and a Maori Cultural performance. During your guided tour, you'll learn about the history of the treaty and discover the stories and events that shaped New Zealand. The cultural performance inside the carved meeting house includes waiata (singing), poi, a display of Maori weaponry and the haka - a war dance New Zealand is well known for.

SUGGESTED ACTIVITY - Hole in the Rock Scenic Helicopter Flight

This 20 minute scenic flight departs from Paihia and flies over Russell, through the spectacular Bay of Islands and out to the famous Hole in the Rock at Cape Brett. The helicopter departs from Salt Airs heli-pad in central Paihia adjacent to the Paihia wharf and maritime area.

Your accommodation: Sea Spray Suites

Sea Spray Suites offers comfortable and relaxing accommodation close to Paihia's best activities and attractions. Directly across the road is the beautiful Te Ti Beach, exploring Paihia's beautiful waters and wildlife is only a short step away. If you are interested in experiencing New Zealand's heritage, The Waitangi Treaty House is only 1km away.



Day 5



Bay of Islands to Snells Beach via Waipoua Forest

From the Bay of Islands you will head west, leaving the Pacific Ocean for the wilder shores of Hokianga and the Tasman Sea. Small towns Omapere and Opononi are reminiscent of days gone by with a vintage seaside feel and are the perfect place to stop for an ice cream in a hot day. To the south is the Kauri coast, which you're about to explore. Head south into the Waipoua Forest, home to giant Kauri trees. Allow time for one of a number of short walks available in the area. Not to be missed is the five minute loop to view the largest Kauri in New Zealand, Tane Mahuta.

Backtrack cross-country to the Matakoho Kauri Museum an award winning museum with extensive historical displays. Continue on the road to Snells Beach, a lovely little township close to Warkworth. If you arrive in plenty of time, head into Matakana Wine Country for some great dining options. Another must do while you're here is a day excursion to one of many deserted beaches in the Tawharanui Marine Reserve.

Your accommodation: Snells Beach Motel

Snells Beach Motel is perfectly situated, on the Mahurangi East Peninsula, overlooking the beautiful Kawau Bay and in the heart of the wonderful Matakana Coast Wine Country area.



Day 6



Snells Beach to Coromandel Township

Today you will leave Snells beach, driving from Warkworth and passing through Auckland. As you leave the city boundaries you'll note a change in landscape to lush rolling farmland. Cross the Hauraki Plains, one of the largest dairy producing regions in New Zealand, and take in the abundance of black and white friesian cows. You'll go through the Thames Estuary, a haven for wildlife - in particular shore birds. If you're keen on birds, a detour to Miranda is worthwhile to spot the many godwits and oystercatchers. Arriving in the old gold town of Thames you have the option of two routes to the Coromandel. Take the road over the ranges and highway 25A will deliver you to the coast in 45 minutes. If you're up for a little longer, more scenic drive, take the route via the Pohutukawa Coast, north to the Coromandel Township. Known as one of the most spectacular drives in the region, it is well worth your time if you can spare the extra minutes.

SUGGESTED ACTIVITY - Driving Creek Railway & Potteries - EyeFull Tower Tour

Driving Creek Railway and Potteries has become a Coromandel icon. The dream of Barry Brickell was to establish a pottery workshop on his land. Using a railway he would have access to the clay on the land and the pine kiln fuel. Over the next 15 years the railway developed until in 1990 it was finally licensed to carry fare paying passengers and ever since thousands of visitors have made the trip to Coromandel to experience this unique attraction. The 1 hour return train trip on the innovatively designed trains takes you through replanted native kauri forest and includes 2 spirals, 3 short tunnels, 5 reversing points and several large viaducts as it climbs up to the mountain-top terminus. The pottery is still producing and you can watch the artists at work as well as purchase items.

Your accommodation: Coromandel Court Motel

The Motels are in an excellent location with just a 3-minute stroll to shops and restaurants. Well equipped to ensure a comfortable stay.



Day 7



Coromandel Township to Tairua

Head east from Coromandel Township along the scenic coastline of Whangapoua Harbour and Kuaotunu Beach. For this drive leave plenty of time for stops and detours, as there are multiple side roads leading to secluded picnic spots and golden bays. Stop in Whitianga, and grab a bite at one of its many local cafes and eateries. Stretch your legs with a short walking detour and take a ferry over to Cooks Beach and Flaxmill Bay. Continue south, and be sure to take the scenic route down Hot Water Beach Road to Hot Water Beach and the Holiday town of Hahei. Finish your drive to Tairua and feel relaxed as you reach this calm seaside community. Before you leave, head up Paku Hill and take in the spectacular views of the natural harbour and the Pacific Ocean.

Your accommodation: Pacific Harbour Villas

Pacific Harbour Villas is a perfectly located Tairua accommodation set among lush gardens on the shores of the spectacular Tairua Harbour.



Day 8



Tairua to Rotorua via Tauranga

Today you'll be leaving the Coromandel Peninsula and passing through the town of Whangamata, a popular tourist destination for Kiwi holidaymakers and home to one of the best beaches in the region. Stop in Wahi to view its operational open cast gold mine, just follow the signs to a unique vantage point overlooking the Martha Mine. For rail enthusiasts, be sure to take a trip on the Goldfields Railway along its historic and scenic track. Continue on through the Bay of Plenty and the portside city of Tauranga. Your driving route now takes you along the Pyes Pa Road to Rotorua. If Lord of the Rings is your thing take a detour along State Highway 29 to Matamata, home to the fictional Tolkien village, Hobbiton. As you arrive into Rotorua take in the spectacular lake views along with clouds of steam rising from multiple geysers across the region.

SUGGESTED ACTIVITY - Te Pā Tū Evening Maori Cultural Experience

New Zealand's Most Awarded Cultural Attraction, presenting Te Pā Tū. Feast on song, drama, tradition, and divine seasonal kai (cuisine) within the forest Pā (village) blanketed by towering Tawa trees, blazing bonfires, and a forest-formed amphitheatre. Te Pā Tū shares Māori history, traditions, and cultural aspirations across 4-hours of celebration and feasting. These events change with each season of the maramataka, the Māori lunar calendar.

Your accommodation: Silver Fern Suites & Spa

Silver Fern Suites & Spa is located just minutes from Rotorua's city centre and is close to popular thermal attractions, cafes, restaurants and golf courses. Suites have a private spa pool or double spa bath for you to unwind and relax.



Day 9



Explore Rotorua

Peppered with natural hot springs, boiling mud pools and steaming geysers, Rotorua sits within one of the world's most active volcanic regions. Geothermal landmarks aside, this city of sulphur has a rich indigenous history. Home to several prominent Maori tribes, a visit to one of the Maori Villages should be high on your agenda, as should an excursion to the Polynesian Spa for an invigorating soak in its natural mineral hot springs.

Spike your adrenaline at Velocity Valley Adventure Park on stomach-dropping attractions such as static skydiving, or a giant swing reaching 130 km per hour. Alternatively, head up the Rotorua Gondola for soaring lake views, and ride the luge at night for an extra thrill.

Fans of Lord of the Rings and The Hobbit should drive to nearby Matamata and experience the actual movie set 'Hobbiton'. Make the most of your time in Rotorua with an excursion through the Wai-O-Tapu Thermal Wonderland, one of the area's most colourful volcanic attractions.

Hobbiton Movie Set tour from Shires Rest

Become immersed in the The Lord of the Rings and Hobbit films when you visit the actual Hobbiton movie set. Located just outside of Matamata in the heart of the lush Waikato farming region, your tour will begin with a drive through a picturesque sheep farm. You'll then be taken through Hobbit Holes, the Green Dragon Inn, the Mill and the Party Tree while your guide shares behind-the-scenes tales and insight into the making of the films. Spend time wandering through Bagshot Row before being led inside a Hobbit Hole to view the detailed interiors, designed to provide an authentic glimpse into the dwelling of a Hobbit.

SUGGESTED ACTIVITY - National Kiwi Hatchery Tour

The National Kiwi Hatchery Tour is a special opportunity to gain insight into and view this highly regarded conservation centre. Developed with the visitor experience in mind, the hatchery boasts special viewing opportunities and is hosted by kiwi expert guides who ensure guests leave fully informed and all questions answered. Learn all about New Zealand's intriguing national icon and the efforts of the kiwi husbandry team, see and discover what it takes to hatch and rear chicks, and if you're lucky see baby chicks in person!

SUGGESTED ACTIVITY - Agrodome Farm Show and Farm Tour Combo

Set on a 350-acre working sheep and cattle farm with 1200 sheep and 120 beef cattle, the Agrodome gives its visitors a hands-on, live farming experience. The Farm Show stars a cast of talented animals – not just sheep! The remarkable farm dogs will amaze you, as they demonstrate their ability to respond to commands and keep those sheep (and ducks!) in line. Then pop across to the herding area to watch a free live dog trial after the show! Explore the farm and learn the history of New Zealand agriculture on custom designed farm trailers. Along the way, there are fascinating things to learn and a few laughs too! You'll get to hand-feed and take photos with all sorts of friendly animals, including Romney sheep, cattle, deer, llamas, ostrich, pigs and alpacas. Explore the fruit orchard and olive grove and have the chance to taste natural kiwifruit juice and delicious sweet honey that comes from the farm.

SUGGESTED ACTIVITY - Waimangu Volcanic Valley Walk and Boat Cruise Combo

Take an eco-focused nature walk or hike through beautiful Waimangu Volcanic Valley thermal park, followed by a relaxing boat cruise on Lake Rotomahana, exploring its geothermal system. This combined walk and boat cruise is a wonderful and relaxing journey through the world's youngest geothermal area. Sit back and relax on your boat cruise. Your skipper will highlight points of interest and the history of this iconic Rotorua geothermal attraction. Following your cruise, you will be transported back to the beginning of the walk by bus.

In 1886, Mount Tarawera in Rotorua erupted and destroyed the surrounding area. The eruption opened the earth along a 17km rift, splitting Mount Tarawera in two, exploding Lake Rotomahana to 20 times its original size, and forming the seven craters that today make up the Waimangu Volcanic Valley. Within 15 years of the Eruption, the hot springs of the Waimangu Geothermal System were established within the newly formed craters, making this the world's newest geothermal eco-system. Plant life returned to the devastated land 30 years after the 1886 eruption. Today Waimangu Volcanic Valley and Lake Rotomahana are wholly protected as a Scenic Reserve and Wildlife Refuge.

Your accommodation: Silver Fern Suites & Spa

Silver Fern Suites & Spa is located just minutes from Rotorua's city centre and is close to popular thermal attractions, cafes, restaurants and golf courses. Suites have a private spa pool or double spa bath for you to unwind and relax.



Day 10



Rotorua to Napier

This drive will take you through the thermal region just south of Rotorua. Home to a plethora of unique geothermal attractions including boiling mud pits, natural hot springs and steaming geysers, this area is a must do before you move on to Napier. Notable attractions are Wai-O-Tapu, Waimangu and Craters of the Moon.

Continue on to Taupo and marvel at the lake, a giant crater formed following a volcanic eruption in the year 180 CE. As you approach the city, be sure to stop at Huka Falls to view the spectacular sight of hundreds of cubic metres of water spilling every second down the narrow 11 metre drop.

For an extra thrill take a jet-boat ride to the base of the falls. Leaving Taupo, follow the road as it climbs the rugged Ahimanawa Range before descending back down the Pacific Coast to art deco Napier.

SUGGESTED ACTIVITY - Wai-O-Tapu Thermal Wonderland

Wai-O-Tapu Thermal Wonderland is a spectacular showcase of New Zealand's most colourful and unique geothermal elements sculpted by thousands of years of volcanic activity. You are introduced to a uniquely different natural landscape – the key to what you see lies below the surface – one of the most extensive geothermal systems in New Zealand, extending over 18-sq. km. Enjoy viewing unique volcanic features as you walk at your own pace along well-defined tracks. Relax in the first-class Visitor Centre, home to the Gift Shop and Caf  facilities. Visit the Mud Pool, the largest in New Zealand, it was originally the site of a large mud volcano which was destroyed through erosion in the 1920s. See the history and beauty of the Lady Knox Geyser at 10:15 am every day. Lady Knox Geyser provides a unique opportunity to see an eruption to heights of 10 to 20 metres.

Your accommodation: The Nautilus Napier

The Nautilus is an Art Deco-inspired waterfront accommodation offering self-contained, luxurious rooms. All featuring stunning panoramic views of the Pacific Ocean. Facilities include a fully-licensed restaurant and bar. Located on Marine Parade it is an ideal location to experience Napier.



Day 11



Explore Napier and the Hawke's Bay

With its Mediterranean climate and Art Deco style, Hawke's Bay is an attractive holiday prospect. As the nation's first winemaking region, a visit to one of its 30 wineries is a must. A trip to Mission Estate touted as the birthplace of NZ wine can't be missed. For the truly enthused head out on a tour of the vines. Those into Gatsby will enjoy the chance to view prominent Art Deco landmarks on a 1930s Vintage Car Tour. Passengers will spend just over an hour learning about the history of the city's architecture including the Napier Municipal Theatre, one of the top ten Art Deco Buildings in the world. If you're after some fresh air, hire a bike and take your pick of one of over 200km of cycling trails or head on down to one of the many beaches that ring the area. Ocean or Waimarama beach are good choices and both are patrolled by surf lifeguards during the summer. Indulge in some local produce and head out on a cheese, chocolate, honey or orchard tour.

SUGGESTED ACTIVITY - Grape Escape half day Hawke's Bay Wine tour

This wine tasting tour is designed for casual imbibers and wine aficionados. Meet like-minded people and share an appreciation of Hawke's Bay's fantastic wines. Taste great wines made with passion and learn of the area's unique growing conditions. Take home outstanding wines and wonderful memories. Join a fun filled wine tasting afternoon in the sun driving through absolutely stunning scenery. Meet like-minded people and share an appreciation of this region's fantastic wine. Visit four to five wineries and enjoy a cheese platter on the grounds of the Ngatarawa Vineyard beside the lily pond.

SUGGESTED ACTIVITY - Gannet Safaris

Drive along the scenic coast from Napier to Te Awanga and join Gannet Safaris Overland and the world's largest, most accessible gannet colony at Cape Kidnappers. Gannet Safaris has been guiding visitors over Cape Kidnappers for over 35 years and their safaris are the only way to be driven right to within a few feet of these remarkable birds. You will travel in comfort in air-conditioned 4 x 4 wheeled vehicles, through Cape Kidnappers Station - traversing riverbeds, broad rolling pastures, stands of native bush, steep gullies and breath-taking inclines. There is a stop on the way at a spectacular cliff top with panoramic views of Hawke Bay right across to Mahia peninsular. The 36km, three hour trip includes a commentary by your tour guide/driver on the farming operation on Cape Kidnappers Station and an introduction to the gannets. On arrival at the gannets you can stretch your legs and take in the scenery from your position at the brink of the cliff's edge, 100 metres above the ocean!

Your accommodation: The Nautilus Napier

The Nautilus is an Art Deco-inspired waterfront accommodation offering self-contained, luxurious rooms. All featuring stunning panoramic views of the Pacific Ocean. Facilities include a fully-licensed restaurant and bar. Located on Marine Parade it is an ideal location to experience Napier.



Day 12



Napier to Martinborough

As you leave the rolling countryside of the Hawke's Bay you'll be greeted with some of the country's richest dairy farmland in the Manawatu Gorge. Continue on through the Wairarapa region and stop in the Pukaha Mount Bruce Wildlife Centre, where you can see some of New Zealand native animals. Take another break in Masterson, and visit the interactive Woolshed Museum to learn about sheep farming in New Zealand. As you drive south, a visit to historic Greytown is a must-do. Take in the restored Victorian buildings and make time for a cup of tea at one of its quaint cafes. Leaving state highway 2 you will cross over the Ruamahanga River into Martinborough wine country your destination for the day.

Your accommodation: The Claremont, Martinborough

Set just outside the main village, The Claremont is the ideal base for you to enjoy everything the region has to offer. Well-appointed, self-contained apartments and units will make your stay very comfortable.



Day 13



Martinborough to Wellington City

Today you will cross the Rimutaka Ranges as you make your way to New Zealand's capital city, Wellington. Often compared to Melbourne, Wellington is vibrant cultural hub. Home to the nation's centre of government. Legislation happens in the aptly named 'Beehive,' an executive wing attached to the Houses of Parliament. At one kilometre squared, the city centre (easily traversed on foot) has an international feel and is peppered with underground art shows, alleyway cafes and New York style delis. Take in the boardwalk view as you stroll to Te Papa Museum or indulge your cinematic side exploring Weta Workshop, the Oscar Award winning design studio for Lord Of The Rings. For a taste of vintage fashion, spend some time (and dollars!) on Cuba Street browsing the boutiques. Work off last night's dinner with a cycling tour of Oriental Bay and undo your good work with a Hokey Pokey ice-cream in the sun. For those heading further down, the capital is where you board the ferry crossing the Cook Strait to the South Island.

Your accommodation: CityLife Wellington

City Life Wellington is a suite style hotel with every amenity required for a comfortable stay, as well as being in a superb location to explore the compact city centre. Situated on Lambton Quay, you'll find the best shopping, tourist attractions and cultural landmarks all within easy walking distance.



Day 14



Interislander Ferry Wellington to Picton

The 92 km journey between Wellington and Picton takes around 3 hours and has been described as 'one of the most beautiful ferry rides in the world'. Leaving Wellington Harbour you pass many interesting points such as Pencarrow Head on top of which is New Zealand's oldest lighthouse (1859). Red Rocks is home to a seal colony and Oterangi Bay is the site which recorded the country's highest ever wind speed of 268 kph (167 mph).

From the Cook Strait spectacular views of the Kaikoura Ranges on the South Island can be enjoyed and dolphins and many sea birds are often seen. Around one hour of the cruise takes you through the Marlborough Sounds and this region of bush covered mountains, small islands, crystal clear waters and secluded bays offer remarkable photographic opportunities. The final leg of your cruise travels through Queen Charlotte Sound before coming to an end in the picturesque town of Picton.

Collect your rental car

This tour can be priced with any of the rental cars available in our fantastic range, from economy hatchbacks to prestige saloons and SUV's.

Picton to Abel Tasman National Park

From Picton you'll first travel the Marlborough sounds coastline between Picton and Havelock. This drive offers spectacular views of the sounds, so be sure to allow plenty of time for stops and sightseeing. Take moment to explore the secluded sandy coves along the narrow road to Portage. Aim to arrive in Havelock for lunch, as this portside town has a great variety of cafes and restaurants to eat at. Stop at the famous Pelorus bridge, just outside of Havelock. From here there are a number of forest walks to stretch your legs on with the most popular being a 30 minute loop through beech, rimu and totara forest. Continue on over the Bryant Range to arrive into Tasman Bay and the city of Nelson. Motueka is a further 45 minutes along the coast and from there it's just a short drive to Kaiteriteri and Marahau, all ideal spots from which to explore the beautiful Abel Tasman National Park.

Your accommodation: Ocean View Chalets

The Ocean View Chalets are situated on a 50-acre farmlet, slightly elevated and nestled along the bush line with panoramic sea views. Great access the National Park and close to the friendly Marahau village.



Day 15



Abel Tasman National Park

Abel Tasman National Park, known for its coastal hiking track has an abundance of golden beaches, inlets and private lagoons. The park has a mild climate and is a special place to visit at any time of the year. Why not enjoy a scenic cruise through the Sounds or take a kayaking tour around its many sheltered bays? Relax to the melodious birdsong and get up close to some of the parks many animal residents, including native bats, geckos, birds and marine mammals fur seals and dolphins.

SUGGESTED ACTIVITY - Abel Tasman National Park Cruise and Walk Open Day Pass

Abel Tasman Cruises combined with short bush walks are a great way to experience this beautiful national park. Join Abel Tasman Wilson's Experiences' boat at Kaiteriteri for your Abel Tasman National Park Cruise. The boat hugs the shore, travelling in close to the idyllic beaches. Your skipper provides a full commentary of the trip. Take your own lunch or pre-order a prepared lunch the night before. The following are some of the more popular cruise and walk options you can choose from.

Vista Scenic Cruise

Cruise from Kaiteriteri, through the Astrolabe Roadstead to Torrent Bay and Bark Bay, calling into picturesque beaches and coves where walkers and kayakers are transferred to golden-sand beaches. Pause to view the antics at Tonga Island Seal Colony in the Marine Reserve, then continue past isolated northern beaches to the long sweep of burnished sands at Totaranui.

Pitt Head Loop

Cruise through the sheltered waters of the Astrolabe Roadstead to disembark at Anchorage Beach. There you can choose to take a leisurely stroll to Te Pukatea Bay or walk the Pitt Head Track. Alternatively relax on the beach and go swimming in the calm azure waters. Walking time is around 1 hour.

Seals and Beach

For the best of everything, this trip is for you. Take a scenic cruise into Tonga Island Marine Reserve, pausing to watch the antics at its resident Fur Seal Colony. Land at historic Tonga Quarry beach then take a walk for about 2 hrs 15 mins (4.1 kms, 2.5 miles) over a forested saddle and around spectacular Bark Bay estuary with its cascading waterfalls.

Bark Bay Falls

From the sheltered beach at Kaiteriteri, cruise past the sculpted granite headlands and islands. Pause to view the long, golden, forest-fringed beaches of Torrent Bay. Disembark at Medlands Beach. A short stroll takes you to popular, sheltered Bark Bay with its pleasantly shaded camping area. Swim in calm azure waters, sunbathe or relax in the shade of native forest trees. A forested track around the estuary takes you to Bark Bay Falls (approx. 1 hour return).

Swing Bridge, Bush and Beach

Cruise into the heart of the National Park with full commentary to introduce you to this fascinating coastline. Disembark at idyllic Medlands Beach, where you will walk to the long golden-sand beach of Anchorage, via Torrent Bay (approx. 4hrs) The track weaves through sunny groves of Manuka and fern between breathtaking views of the granite coast and lush gullies of mature forest, to reach tranquil forest pools. Cross the rushing Falls River by an impressive swing bridge. Allow extra time to take a short side track beside a crystal forest stream to visit tranquil Cleopatra's Pool.

SUGGESTED ACTIVITY - Beaches, Bays and Seals Guided Sea Kayaking Trip Including Picnic Lunch

Combining the best of the Abel Tasman, this trip showcases incredible beaches, coastal walks and native wildlife. First you'll meet your guide and join the 9.30 am Vista Cruise along the magnificent coastline to Torrent Bay. You'll then arrive at Torrent Bay Lodge and complete a full training session and safety briefing before moving on to the water in kayaks to discover beautiful beaches, tidal estuaries and rivers.

Stop for a picnic lunch in a sheltered cove and take some time to swim, explore or sunbathe on the sand. On your return trip, if the winds are favourable, sails will be hoisted and you'll sail back via Pinnacle Island to view the seal colony there - if you're lucky, you may even see some resident blue penguins at the same time. Arriving back at Torrent Bay Lodge, freshen up with a hot shower and re-join the vista cruise back to Kaiteriteri, arriving at 4.10 pm.

During the summer there is the option to enjoy an unguided two hour coastal bush walk after the kayaking trip. Walk around the picturesque Torrent Bay Lagoon via Cleopatra's Pool to the anchorage where you will re-join the boat back to Kaiteriteri.

Your accommodation: Ocean View Chalets

The Ocean View Chalets are situated on a 50-acre farmlet, slightly elevated and nestled along the bush line with panoramic sea views. Great access to the National Park and close to the friendly Marahau village.



Day 16



Abel Tasman National Park to Kaikoura

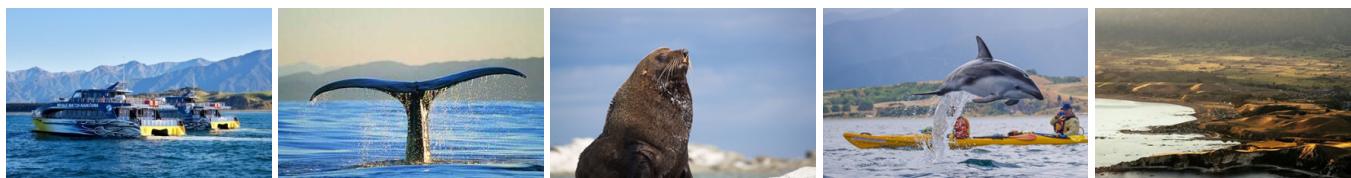
Today you will take the scenic route, down towards the spectacular landscapes of Nelson Lakes National Park. After taking in the sights there, you will back up and pass through Marlborough and Blenheim, New Zealand's largest wine growing regions - and home to many award winning wines. We recommend timing your day to arrive for lunch with a view to sampling some of the local offerings at one of the 40 plus wineries surrounding the area. Continue over the dry hills of the Marlborough Ranges to one of the most spectacular coastlines in the world, Kaikoura. For over 50 kilometers (30 miles) follow the shoreline. Keep an eye out for an abundance of seals, seabirds and other native wildlife. Kaikoura is also one of the only places in the world where whales can be seen all year round. To the east you'll see the Pacific Ocean while the West brings views of the towering Kaikoura ranges. Arriving in the Kaikoura township, you'll find it bustling with cafes and restaurants.

Your accommodation: The White Morph, Kaikoura

Set on the Esplanade in Kaikōura, The White Morph enjoys commanding views of the ocean and mountains. Just a 10-minute walk into town, The White Morph has been beautifully placed so that you can take in the spectacular scenery of Kaikoura while enjoying the variety of attractions on offer.



Day 17



Kaikoura

The Kaikoura Coast is renowned for its abundant marine life, and this is huge visitor drawcard. Due to the teeming food supply in its icy seas, whales, seals and dolphins are frequently spotted year round in the area. Observe the fur seal colony basking in the sun at the tip of the peninsula and be sure to take a trip by boat to view the whales.

If you prefer, hop aboard a 30 minute scenic flight and see the coast by air. But if you're feeling really adventurous take a dip with the resident seal population on either a land or boat based trip. Kaikoura township has a charming feel and after a day of marine adventures is the perfect place to grab a bite to eat. Not to be missed is a meal of fresh crayfish - the town's signature dish. Before you leave, visit historic Fyffe House for insight into the region's Whaling Past.

Ocean's Cabin with Whale Watch Kaikoura

Experience New Zealand's only marine based whale watching company. Whale Watch Kaikoura offer a once-in-a-lifetime, up close encounter with the giant Sperm Whale. You are also likely to encounter New Zealand fur seals, dusky dolphins and albatross. Depending on the season you may also see pilot, blue and southern right whales as well as migrating humpbacks. Often orcas can be spotted here and the world's smallest dolphin, the Hector's, occasionally make an appearance.

Cruise in style on modern catamarans, specifically designed for whale watching, featuring large passenger cabins and outside viewing decks. Passenger numbers for each tour are kept below the vessel carrying capacity to ensure your tour experience remains a personal one.

SUGGESTED ACTIVITY - Albatross Encounter Tours

A world renowned marine reserve, Kaikoura is brimming with marine life and ocean-going birds. It is the Albatross capital of the world and has up to 14 different species visiting the area throughout the year. You'll be taken by boat, 15 minutes off the coast where a huge range of elusive and usually inaccessible albatross can be sighted. You'll also see penguins, gannets, skuas, shearwaters, petrels and terns. Travel in a dedicated albatross encounter vessel, adapted specifically for maximum wildlife viewing opportunities.

Your accommodation: The White Morph, Kaikoura

Set on the Esplanade in Kaikōura, The White Morph enjoys commanding views of the ocean and mountains. Just a 10-minute walk into town, The White Morph has been beautifully placed so that you can take in the spectacular scenery of Kaikoura while enjoying the variety of attractions on offer.



Day 18



Kaikoura to Christchurch

Today you travel down the coast before heading inland through the North Canterbury wine region - the Waipara Valley. As you drive through this area you'll be greeted by one of New Zealand's most notorious animals, the sheep. If you've time on your hands we recommend taking a detour to Hanmer Springs for a relaxing dip in its thermal pools. Arriving into Christchurch you'll see a new and improved city, steadily rising from the ruins of the 2011 earthquake.

SUGGESTED ACTIVITY - Willowbank Wildlife Reserve

Nowhere else in New Zealand will you find such a wide range of New Zealand wildlife so close to you. Willowbank provides you with a "Kiwi Guarantee" and is home to New Zealand's largest and most accessible kiwi viewing area. With this unique experience, you will see New Zealand's natural splendour first hand, and view Kiwis that are not hidden behind glass. You will explore one of the most complete selections of New Zealand native and introduced wildlife in natural bush surroundings. Much of the Willowbank wildlife wander free and is able to be petted and fed.

Choose to explore the reserve yourself, or for an up-close Kiwi experience, you can take a guided tour.

Your accommodation: Quest on Cambridge

Quest on Cambridge serviced apartment-style hotel rooms offer guests a relaxed and comfortable Christchurch accommodation experience. Each room has an open-plan living area, a fully equipped kitchen, and natural light. Quest on Cambridge is a short walk from the south shopping center and only a short walk to the Botanic Gardens.



Day 19



Explore Christchurch City

Following the 2011 earthquake that razed its centre and much of the outlying suburbs, Christchurch is well into a billion-dollar makeover. In the middle of the Canterbury Plains, bordering the Pacific Ocean, New Zealand's newest city is an ideal gateway to exploring the middle of the South.

Go punting on the Avon River, take a historic tram ride, catch the gondola to the rim of an extinct volcano or do all three! See the world's only Cardboard Cathedral and for nature enthusiasts - wander the renowned Christchurch Botanic Gardens, or head to Oxford Terrace in the city to find a great spot to eat or drink.

Drive an hour in any direction to ski, mountain bike, wine taste, whale-watch, bungee jump or play golf. Take the winding Port Hills road to the French settlement of Akaroa and tour the vines in Waipara for an authentic New Zealand wine-tasting experience.

SUGGESTED ACTIVITY - Lord of the Rings Edoras Tour

Journey to the remote and beautiful Mt Potts high country station, home of Mt Sunday. See how this spectacular mountain was transformed into Edoras, the capital city of the Rohan people from the Lord of the Rings trilogy. Marvel at its rugged unspoiled beauty and breathe in the clear mountain air, while you indulge in a gourmet sparkling wine picnic.

SUGGESTED ACTIVITY - Christchurch Triple Pass - Tram, Punting and Gondola

Experience three of Christchurch's iconic attractions in one day: the Christchurch Tram, Christchurch Gondola, and Punting on the Avon River. The historic tram is a delightful way to explore the evolving inner city, taking in the various sights with the hop-on hop-off pass and learning about the city from the live commentary. You'll also enjoy a bird's eye view of Christchurch and the Canterbury region including the distant peaks of the Southern Alps when you ride the gondola cableway to the top of the Port Hills in Heathcote Valley. Punting on the Avon River takes you through the city's green belt: a relaxing way to explore what is affectionately known as the 'Garden City'.

Your accommodation: Quest on Cambridge

Quest on Cambridge serviced apartment-style hotel rooms offer guests a relaxed and comfortable Christchurch accommodation experience. Each room has an open-plan living area, a fully equipped kitchen, and natural light. Quest on Cambridge is a short walk from the south shopping center and only a short walk to the Botanic Gardens.



Day 20



Christchurch to Aoraki Mt Cook National Park

Today you'll drive through the heart of the South Island, crossing the vast Canterbury plains. Catch your breath in Geraldine before continuing through Fairlie. Ascending Burkes pass you'll come to the picturesque lakeside town of Tekapo.

Follow the road and take in the view of Aoraki Mt Cook (New Zealand's tallest mountain) from the shores of Lake Pukaki, known for its glacier fed turquoise blue colour. Continue along the lake to your final destination Mt Cook Village.

Please note: There are no food shops at Mt Cook, and dinner options are limited to one restaurant. If you wish to self-cater, you must stock up before arriving in Mt Cook, or make dinner reservations in advance.

SUGGESTED ACTIVITY - Glacier Explorers Mt. Cook

Experience 500 year old icebergs up-close on the Mt Cook terminal lake. The Glacier Explorers tour is the only one of its kind in New Zealand and one of only three in the world! Very few glaciers terminate into lakes and even fewer of them are accessible. See towering ice cliffs and floating icebergs from the safety of a specially designed boat. These boats provide a safe way to view unseen and inaccessible areas of New Zealand's largest glacier The Tasman.

SUGGESTED ACTIVITY - Mountain High Scenic Flight with The Helicopter Line

The premier flight over this amazing alpine region with vast snowfields, glaciers and a spectacular view of New Zealand's highest peak, Aoraki/Mount Cook. Land high above glaciers and experience what it feels like to stand in snow amongst the mountains. Traverse the Southern Alps to view the mighty Fox and Franz Josef Glaciers as they journey slowly down towards the native rainforests and the Tasman Sea on the rugged West Coast. Should weather not be suitable to take this flight you are able to transfer your booking onto a similar tour on any of the Helicopter Line's operations in Queenstown or Mt Cook.

SUGGESTED ACTIVITY - Sir Edmund Hillary Alpine Centre Museum and Theatre Explorer Pass

A tribute to New Zealand's Sir Edmund Hillary, a humanitarian, ambassador, and one of the world's greatest explorers. The centre showcases the Aoraki Mount Cook region, the history of climbing, and early transport used throughout the region. This comprehensive museum details the life of Sir Edmund Hillary, the Hermitage, and provides access to the 126-seat custom-designed theatre. Check out the daily film schedule which includes 3D Movies, documentaries, and 360-degree digital dome features.

SUGGESTED ACTIVITY - Big Sky Stargazing

Mt Cook is far from the city lights and therefore has some of the darkest skies in New Zealand, perfect for viewing the night sky! Their fully trained guides are delighted to show you the beautiful southern night sky using the naked eye, state of the art astronomy telescopes and binoculars at the outdoor viewing platform. If the weather is not favourable then there will be an indoor alternative featuring New Zealand's first full dome digital Planetarium, a high-definition video images on a suspended 9m wide x 4.5m high full dome. Unleash your imagination as you discover the night sky including the Southern Cross, seasonal ecliptic objects, planets, star clusters, moons, distant galaxies and even our very own galaxy, the spectacular Milky Way!

Your accommodation: Mt Cook Motel

Mt Cook Motel is located in the centre of Mt. Cook village. The self-contained units are spacious and all are surrounded by alpine mountain views.



Day 21



Aoraki Mt Cook National Park to Dunedin

Today you'll leave Aoraki Mt Cook National Park and travel past Twizel, one of the locations for the Lord of the Rings films. Go through Omarama, the gliding capital of New Zealand, be sure to stop at The Wrinkly Ram, a quirky local cafe and souvenir store. Driving through the Waitaki Valley follow the hydro power generating system towards the east coast. Stretch your legs in Oamaru, known for its white stone buildings constructed with the local Oamaru Stone. If you were a little late off the mark this morning you may get the chance to see the blue penguins come ashore at dusk.

Continue south down the coast to Moeraki, and take a detour towards the beach to see the Moeraki Boulders, a unique geological feature well worth a look. As you arrive in Dunedin, take in the city's Edwardian and Scottish heritage reflected in the buildings around the city centre The Octagon.

SUGGESTED ACTIVITY - Speights Brewery Tour

Founded in 1876, the Speights Brewery still occupies its original Dunedin site - with several of its buildings dating back to the late 1800's. One of the only remaining 'gravity breweries' in the world, this 60-minute tour explains its inner workings. There is an opportunity to taste six different beers as well as bottle, cap and brew your own personal Speights Gold Medal Ale - the brewery's flagship beer.

Your accommodation: Motel on York

Motel on York is located in the heart of Dunedin city. The property offers superior accommodation only 300 metres away from cafes and restaurants.



Day 22



Explore Dunedin and the Otago Peninsula

Known as the Edinburgh of the South, Dunedin City has a heavy Scottish influence. Surrounded by rugged coastal plains and windswept beaches it's home to an eclectic mix of historical and modern architecture as well as industrial technology. Renowned for its Flemish Baroque-inspired 'gingerbread house' Railway Station, this university town is bustling with life. Head to the Saturday farmers market held in the aforementioned railway grounds for a taste of organic produce, handmade crepes and local honey. Explore the many cafes and wine bars in The Octagon, then continue on a self-guided walking tour of the internationally acclaimed Street Art dotted around the city. Drive to the coast and watch the freighters passing in the distance while you sunbathe, or hire a mountain bike and test your legs on one of the many trails available in the area. For a more immersive historical experience, follow the coast to New Zealand's only castle, Larnach Castle. On your way back be sure to head to the Otago Peninsula to see the largest mainland Albatross colony in the world.

SUGGESTED ACTIVITY - Castle to Cruise Tour and Penguin Place

Today you'll explore the wildlife and history of the Otago Peninsula. You'll be welcomed to the MV Monarch for a wildlife cruise around Taiaroa Head, home to the world's only mainland nesting site for royal albatross. Scattered along the rocks you'll also see New Zealand fur seals basking in the sun and possibly New Zealand sea lions on the beach. In the water you may also see penguins, dolphins and other marine birds. Back on land you'll take a guided tour of New Zealand's only castle, Larnach Castle built in 1871. Learn of the scandals and history of the castle and explore the beautiful garden of international significance. Your final stop of the day is to The Otago Peninsula Eco Restoration Alliance (formally Penguin Place), a natural nesting site for the rarest penguin in the world, the Yellow Eyed Penguin.

Your accommodation: Motel on York

Motel on York is located in the heart of Dunedin city. The property offers superior accommodation only 300 metres away from cafes and restaurants.



Day 23



Dunedin to Te Anau

The drive to Te Anau takes you through classic Southland farming scenery. Head off-the-beaten-track today and follow the coastline instead of the inland route. Go through The Catlins area and be sure to take a detour to Kaka Point to view its majestic cliffs and pounding surf. Continue through Invercargill to Riverton and Colac Bay, and then head north to Manapouri. From here you can embark on a day or overnight cruise to the remote Doubtful Sound, renowned for its natural beauty. Just a short way further will bring you to your lakeside destination of Te Anau, gateway to Fiordland National Park and Milford Sound.

SUGGESTED ACTIVITY - Te Anau Glowworm Caves with RealNZ

Begin your Te Anau Glowworm experience with a scenic cruise across Lake Te Anau on board the luxury catamaran, Luminosa, to the western side of the lake. On arrival, you'll enter the caves through Cavern House, where informative displays detail the history of this 12,000 year old underground network.

You'll then explore by limestone pathway while your guide points out hidden whirlpools, sculpted rock formations and a rushing underground waterfall. See a magical display of thousands of glowworms as you glide through the darkness in a small boat.

Your accommodation: Lakefront Lodge

Stylish self contained motel units less than one minute walk from Te Anau Lakefront. Close to shops, cafes and restaurants.



Day 24



Te Anau to Milford Sound and return to Te Anau

The road to Milford Sound offers some of the most beautiful and iconic scenery in the country. From crystal clear lakes and towering mountains to lush glacier formed meadows, this area is dramatic and unyielding. Stretch your legs on the Chasm Walk, a short stroll through native beech forest to see several powerful waterfalls. Continue on through the Homer Tunnel, an engineering marvel at 1219 metres long. Arriving into the village of Milford, you will be greeted with an amazing view of Mitre Peak. A day cruise into the heart of the sound is not to be missed.

You'll learn about how this magnificent area was formed and experience the wonder of the falls that line the Fiord before back-tracking the way you came.

Please note: Make sure to allow 2.5hrs to Milford Sound, this takes into account the current road works on the Milford Road.

Milford Sound Cruise with RealNZ

Get up close and personal with Milford Sound on a leisurely cruise of this spectacular fiord. From thundering waterfalls to sky-high mountains to lush rainforests, Milford has it all. Experience the spray of a waterfall as you cruise close to sheer rock faces. Informative, participative and relaxed, this is the perfect way to experience Milford Sound to the fullest.

Your accommodation: Lakefront Lodge

Stylish self contained motel units less than one minute walk from Te Anau Lakefront. Close to shops, cafes and restaurants.

Meals included: Lunch



Day 25



Te Anau to Queenstown

Today you'll cross vast tussock lands on your way to Queenstown. Pass through Mossburn, the deer capital of the nation. Continue on through the Southland countryside where the road begins to hug the lake edge and the Remarkables mountain range towers over your approach into the adventure capital of New Zealand.

SUGGESTED ACTIVITY - TSS Earnslaw cruise to Walter Peak including gourmet BBQ dinner and a farm tour

Enjoy a quintessential Kiwi experience, a delicious gourmet BBQ buffet meal and a farm demonstration in a stunning lakeside setting. Take in the stunning views of Lake Wakatipu and its surroundings as you cruise across the lake to the historic Walter Peak high country farm aboard the TSS Earnslaw Steamship.

Enjoy the ambience of the heart of the stately homestead while your Colonel's Homestead Restaurant chef prepares a gourmet BBQ dinner. Your seasonal menu includes an extensive selection of local New Zealand produce, including succulent meats and a selection of delicious vegetables and salads. Complete your meal with your choice of delicious desserts, New Zealand cheeses, tea and coffee.

After dinner, watch the farm dogs in action with a sheep-herding demonstration and say hello to the other farm animals. Finally, cruise home under the southern stars and enjoy the fresh night air as the lights of Queenstown draw ever closer.

Your accommodation: Scenic Suites Queenstown

Scenic Suites Queenstown offers guests exquisite style, comfort and spectacular views over Lake Wakatipu and the Southern Alps. The hotel prides itself on its four star hospitality that will make your stay in Queenstown even more memorable.



Day 26



Explore Queenstown

Well-known as New Zealand's 'adventure capital', Queenstown is home to a range of adventures, from the world's first and most famous bungy jumps to jet boat thrills, white-water rafting, and skydiving. However, Queenstown offers far more than a fast-paced, action-packed holiday. Settled on the shores of beautiful Lake Wakatipu beneath a soaring panorama of the Remarkables Mountain Range, this alpine town is surrounded by a plethora of historic, gastronomic, and scenic wonders. Take a stroll through the beautiful lakefront parks and gardens, browse through market stalls on weekends, dine in wonderful al-fresco restaurants, or ride on the 100-year-old historic Steamship - TSS Earnslaw to Walter Peak Station. Take the Queenstown Gondola up to Bob's Peak and soak up the panoramic views of the magnificent lake and mountain ranges. And after all of that, if you do want the adrenaline rush, Queenstown is known for taking your pick from the Shotover Jet, Canyon Swing, Zipline, Luge, or Heli-ski.

SUGGESTED ACTIVITY - Shotover Canyon River Jet Boat Adventure

Riding the iconic 'Big Red' Jet Boat through the narrow Shotover Canyon is an exhilarating experience not to be missed. Your skilled jet boat driver pushes the boat to 85 kph, skimming across shallow water and past towering canyon walls. This 25 minute white water ride includes 360 degree spins and maximum thrills.

SUGGESTED ACTIVITY - Gondola and Buffet Dinner with Skyline Queenstown

With breathtaking views across Queenstown and Lake Wakatipu, the Skyline Complex is a must-do. Catch the fully enclosed gondola to the summit for a remarkable panorama of the city surrounds. Wander the outdoor viewing decks then enjoy a gourmet buffet meal in the Stratosphere Restaurant.

Your accommodation: Scenic Suites Queenstown

Scenic Suites Queenstown offers guests exquisite style, comfort and spectacular views over Lake Wakatipu and the Southern Alps. The hotel prides itself on its four star hospitality that will make your stay in Queenstown even more memorable.



Day 27



Queenstown to Franz Josef Glacier via Wanaka

From Queenstown you'll cross the Crown Range, the highest sealed road in New Zealand to arrive in the Alpine town of Wanaka, gateway to Mt Aspiring National Park. Skirting the shores of both Lake Wanaka and Hawea, you will enter the small town of Makarora. Stop at Blue Pools for a 1-hour return walk through the native beech forest to a glacier-fed swimming hole. Continue on through the remote seaside settlement of Haast before heading up the wild West Coast highway you pass through ancient temperate rainforests while getting sneak peeks of the wild coast beaches occasionally. Paringa Salmon Farm is worth a stop to stretch your legs, feed the fish, and stop for lunch and refreshments. Keep heading North and be sure to enjoy the view of the ever-changing towering snowcapped Southern Alps Mountain Range. Fox Glacier welcomes you first, then comes your destination for the night Franz Josef township.

Your accommodation: Punga Grove Motel & Suites

Punga Grove is right in the heart of Franz Josef Glacier village and offers affordable and stylish accommodation in a beautiful rainforest setting.



Day 28



Explore Franz Josef

Franz Josef is a small but lively town in the heart of the West Coast, known for its 12 km long glacier. Surrounded by lush rainforest-clad mountains the township has a vibrant and bustling atmosphere. To see the ice from a viewpoint you can walk along the valley floor to the viewpoint below the terminal face. However, to go on the glacier itself you must take a licensed helicopter tour.

Off-Road Quad Bike Adventure Tour with Franz Josef Wilderness Tours

Let us take you on an amazing, guided off-roading adventure, ride through a beautiful rainforest, splash through rivers, and explore an ancient glacier riverbed while being blown away by the breathtaking scenery including the spectacular Southern Alps and Franz Josef Glacier. Your guide will kit you out with wet weather gear and gumboots and teach you how to ride our off-roading vehicles. They will entertain you and amaze you with beautiful Maori Legends and local history while refining your skills and giving you new challenges to conquer. Either take a single quad bike all to yourself or take a double quad bike or buggy and bring a passenger along for the ride or take one of our three-seater buggies that can fit two adults and one child.

SUGGESTED ACTIVITY - Twin Glacier Scenic Helicopter Flight with The Helicopter Line

Take a spectacular scenic flight over two of New Zealand's most famous glaciers. Land at the head of one and view the incredible sight of this frozen river as it winds its way through ancient carved valleys. Should weather not be suitable to take this flight you are able to transfer your booking onto a similar tour on any of the Helicopter Line's operations in Queenstown or Mt Cook.

SUGGESTED ACTIVITY - Franz Josef Glacier Helihike with The Helicopter Line

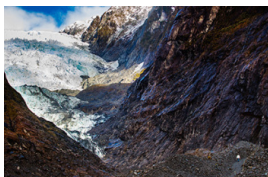
Take a scenic flight over all three Franz Josef glacier icefalls. Landing high on the glacier take a two hour guided trip through some of the most beautiful terrain in the country. Your guide will choose the route as you go through a wonderland of blue ice and frozen pinnacles. You'll have endless views of the surrounding mountains and rainforest as well as plenty of opportunities to take photographs. Sure to be one of the most memorable experiences you have while you are in New Zealand. Should weather not be suitable to take this flight you are able to transfer your booking onto a similar tour on any of the Helicopter Line operations in Queenstown or Mt Cook.

Your accommodation: Punga Grove Motel & Suites

Punga Grove is right in the heart of Franz Josef Glacier village and offers affordable and stylish accommodation in a beautiful rainforest setting.



Day 29



Franz Josef to Greymouth Train Station

Today head north along the mighty West Coast highway you pass through ancient temperate rainforests while getting sneak peeks of the wild coast beach occasionally. Whataroa is the next town where you can see one of the world's rarest birds, the New Zealand white heron or Kotuku nest at the Waitangi Roto Nature Reserve, and guided tours from October to March will take you there.

Ross is the site of an old gold mining town and some of the old buildings and workings remain. In fact, Ross is still home to one of the few working gold mines left in New Zealand and the local information center offers you the chance to pan for gold.

Hokitika is a great place to explore craft and gift stores and head to the coast and take in the endless sea views. The Jade or Greenstone on offer in Hokitika is probably some of the best you will see in the country. The Hokitika Gorge is located 45 minutes inland and offers turquoise waters flowing through a narrow gorge. A great short walk will deliver you to this piece of paradise.

Continue on to Greymouth, the largest town on the West Coast and the starting point for the next leg of your journey the TranzAlpine Scenic Train. Drop your rental car at the Greymouth Train Station depot located at the train station building before boarding your train to Christchurch.

TranzAlpine Scenic Train: Greymouth to Christchurch

Considered one of the world's great train journeys, the TranzAlpine Scenic Train takes you from Greymouth to Christchurch. You'll travel across the South Island from the west to the east coast through Arthur's Pass National Park. From the comfort of your carriage see lush beech forest, deep river valleys and the spectacular peaks of the Southern Alps. Descend to the windswept Canterbury Plains before arriving in the city of Christchurch.

Shared Transfer from the Railway Station to a City Hotel with Christchurch Touring

On arrival at the Christchurch railway station, you will be met by a driver and transferred to your Christchurch accommodation.

SUGGESTED ACTIVITY - TranzAlpine Scenic Plus Addon - KiwiRail

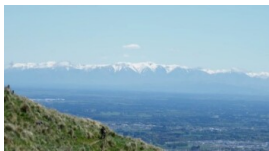
Feel like luxurious service, exclusive meals, inclusive drinks and priority check in and boarding? The Scenic Plus add-on option is for you. Enjoy personal service with panoramic windows, spacious carriages and comfortable seating. The exclusive open-air viewing carriage is available if you feel like capturing the ultimate photo or simply wish to experience the great outdoors whilst travelling through the Southern Alps. Your food is prepared exclusively in a kitchen carriage, with paired drinks and a paddock to plate regionally inspired food menu all your senses will be fully engaged on this journey.

Your accommodation: Quest on Cambridge

Quest on Cambridge serviced apartment-style hotel rooms offer guests a relaxed and comfortable Christchurch accommodation experience. Each room has an open-plan living area, a fully equipped kitchen, and natural light. Quest on Cambridge is a short walk from the south shopping center and only a short walk to the Botanic Gardens.



Day 30



Private transfer accommodation to Christchurch Airport

A private transfer will collect you from your accommodation and transfer you to Christchurch Airport in time for your departing flight.

Tour details

Departures:	Daily
Tour type:	Nationwide Self Drive
Starts:	Auckland
Finishes:	Christchurch
Tour length:	30
Accommodation:	Motels
Car/transport type:	

Included activities

Includes	Private airport transfers
Includes	Private train station transfers
Includes	TranzAlpine Train from Greymouth to Christchurch
Includes	Interislander ferry crossing
Includes	Whale Watch Kaikoura tour
Includes	Real Journeys Milford Sound Cruise

Accommodation summary

Day 1	Sudima Auckland City
Day 2	Sudima Auckland City
Day 3	Sea Spray Suites
Day 4	Sea Spray Suites
Day 5	Snells Beach Motel
Day 6	Coromandel Court Motel
Day 7	Pacific Harbour Villas
Day 8	Silver Fern Suites & Spa
Day 9	Silver Fern Suites & Spa
Day 10	The Nautilus Napier
Day 11	The Nautilus Napier
Day 12	The Claremont, Martinborough
Day 13	CityLife Wellington
Day 14	Ocean View Chalets
Day 15	Ocean View Chalets
Day 16	The White Morph, Kaikoura
Day 17	The White Morph, Kaikoura
Day 18	Quest on Cambridge
Day 19	Quest on Cambridge
Day 20	Mt Cook Motel
Day 21	Motel on York
Day 22	Motel on York
Day 23	Lakefront Lodge
Day 24	Lakefront Lodge
Day 25	Scenic Suites Queenstown
Day 26	Scenic Suites Queenstown
Day 27	Punga Grove Motel & Suites
Day 28	Punga Grove Motel & Suites
Day 29	Quest on Cambridge